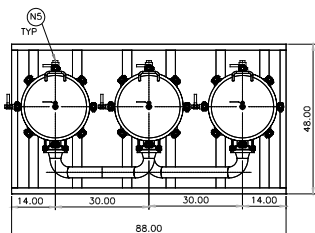
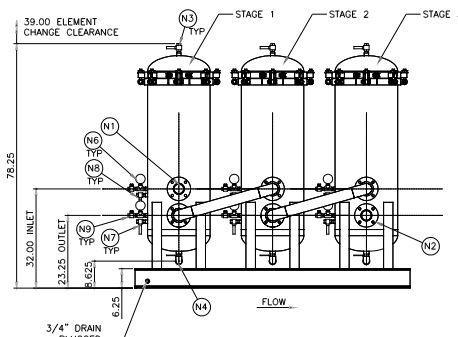


DESIGN DATA			
DESIGN PRESSURE	1149 PSIG		
MIN./MAX. DESIGN TEMP.	+40F/-100F (70" IDEAL)		
VESSEL OPENING SCHEDULE			
MK. NO.	SIZE	TYPE	REMARKS
N1	*	*	INLET
N2	*	*	OUTLET
N3	3/4"	FNPT	VENT, 3" BALL VALVE
N4	1"	FNPT	CLEAN DRAIN, 1" BALL VALVE
N5	1"	FNPT	DIRTY DRAIN, 1" BALL VALVE
N6/N7	1/2"	FNPT	DPI
N8/N9	1/2"	FNPT	TEST PT., 3" BALL VALVE

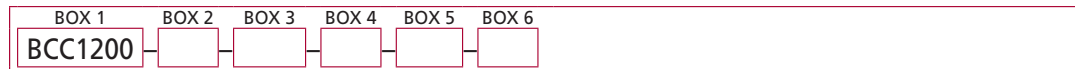
REPLACEMENT CARTRIDGE				
STAGE	PART NUMBER	QTY. (900)	QTY. (1200)	QTY. (1500)
1	BCC39QPRE	3	4	5
2	BCC39QPOL	3	4	5
3	BCC39QPOL	3	4	5



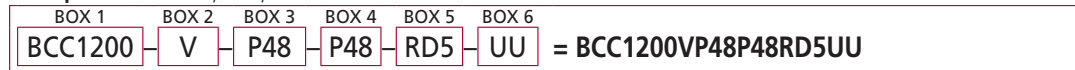
MODEL NUMBER					
BOX 1 MODEL CODE	BOX 2 SEALS	BOX 3 INLET PORTING	BOX 4 OUTLET PORTING	BOX 5 STAGE 1 INDICATOR	BOX 6 TEST POINTS
BCC900	V=VITON	P48=3" NPT A48=3" ANSI 150# FLANGE	P48=3" NPT A48=3" ANSI 150# FLANGE	OMIT=NONE RD5=VISUAL POP-UP DPG1=DIFFERENTIAL PRESSURE GAUGE RMS10=ELECTRICAL W/DIN CONNECTOR (MALE END ONLY)	OMIT=NONE UU=TEST POINTS IN EACH STAGE
BCC1200					
BCC1500					



## How to Build a Valid Model Number for a Schroeder BCC1200:



Example: NOTE: One option per box



BOX 1	BOX 2	BOX 3	BOX 4
<b>Filter Series</b>	<b>Seals</b>	<b>Inlet Porting</b>	<b>Outlet Porting</b>
BCC1200	V = Viton®	P48 = 3" NPT A48 = 3" ANSI 150# Flange	P48 = 3" NPT A48 = 3" ANSI 150# Flange
	<b>BOX 5</b>	<b>BOX 6</b>	
	<b>Dirt Alarm®</b>	<b>Test Points</b>	
	Omit = None RD5 = Visual Pop-up DPG1 = Differential Pressure Gage RMS10 = Electrical w/ DIN connector (male end only)	Omit = None UU = Test Points in all housings	

### NOTES:

Box 2. Viton® is a registered trademark of DuPont Dow Elastomers

Stage 1 Cartridge:	BCC39QPRE
Stage 2 & 3 Cartridges:	BCC39QPOL

## Filter Model Number Selection

- ICF
- BDF
- BDFA
- BDA
- QCF
- BDS
- BDS2
- BDS3
- BDS4
- LVH-F
- LVH-C
- BDFC
- BDC
- HDP
- HDPD
- EPM
- EPTT
- EWU

**BCC**

## Replacement Cartridges