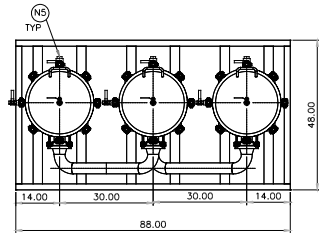


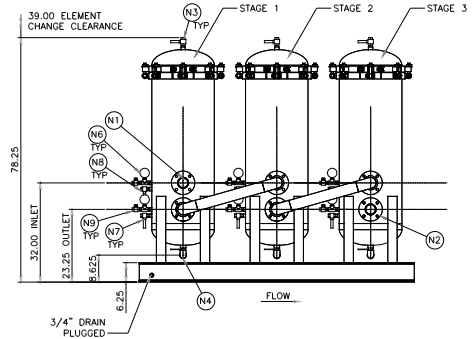
DESIGN DATA			
DESIGN PRESSURE	149 PSIG		
MIN./MAX. DESIGN TEMP.	40F-100F (70° IDEAL)		
VESSEL OPENING SCHEDULE			
MK. NO.	SIZE	TYPE	REMARKS
N1	*	*	INLET
N2	*	*	OUTLET
N3	3/4"	FNPT	VENT, 1/2" BALL VALVE
N4	1"	FNPT	CLEAN DRAIN, 1" BALL VALVE
N5	1"	FNPT	DIRTY DRAIN, 1" BALL VALVE
N6/N7	1/2"	FNPT	DPI
N8/N9	1/2"	FNPT	TEST PT., 1/2" BALL VALVE

* PER MODEL CODE CHART

REPLACEMENT CARTRIDGE				
STAGE	PART NUMBER	QTY. (900)	QTY. (1200)	QTY. (1500)
1	BCC39QPRE	3	4	5
2	BCC39QPOL	3	4	5
3	BCC39QPOL	3	4	5

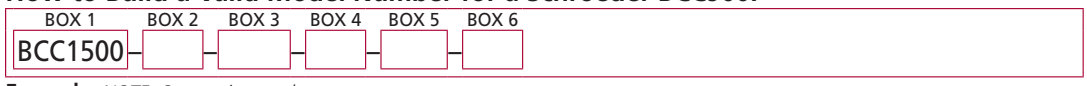


MODEL NUMBER					
BOX 1 MODEL CODE	BOX 2 SEALS	BOX 3 INLET PORTING	BOX 4 OUTLET PORTING	BOX 5 STAGE 1 INDICATOR	BOX 6 TEST POINTS
BCC900	V=VITON	P48=3" NPT A48=3" ANSI 150# FLANGE	P48=3" NPT A48=3" ANSI 150# FLANGE	OMIT=NONE RD5=VISUAL POP-UP DPG1=DIFFERENTIAL PRESSURE GAUGE RMS10=ELECTRICAL W/DIN CONNECTOR (MALE END ONLY)	OMIT=NONE UU=TEST POINTS IN EACH STAGE
BCC1200					
BCC1500					

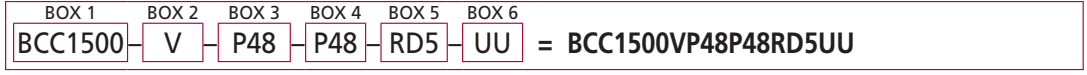


Filter Model Number Selection

How to Build a Valid Model Number for a Schroeder BCC900:



Example: NOTE: One option per box



<p>BOX 1</p> <p>Filter Series</p> <p>BCC1500</p>	<p>BOX 2</p> <p>Seals</p> <p>V = Viton®</p>	<p>BOX 3</p> <p>Inlet Porting</p> <p>P48 = 3" NPT A48 = 3" ANSI 150# Flange</p>	<p>BOX 4</p> <p>Outlet Porting</p> <p>P48 = 3" NPT A48 = 3" ANSI 150# Flange</p>
<p>BOX 5</p> <p>Dirt Alarm®</p> <p>Omit = None RD5 = Visual Pop-up DPG1 = Differential Pressure Gage RMS10 = Electrical w/ DIN connector (male end only)</p>		<p>BOX 6</p> <p>Test Points</p> <p>Omit = None UU = Test Points in all housings</p>	

NOTES:

Box 2. Viton® is a registered trademark of DuPont Dow Elastomers

Replacement Cartridges

Stage 1 Cartridge:	BCC39QPRE
Stage 2 & 3 Cartridges:	BCC39QPOL