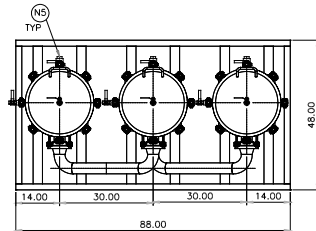
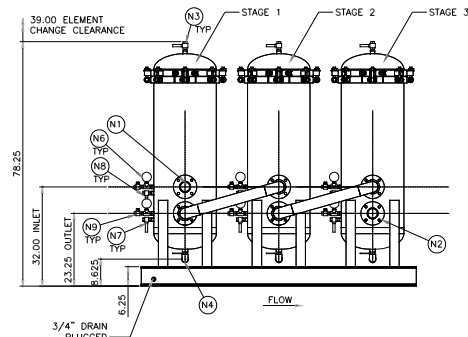


DESIGN DATA			
DESIGN PRESSURE	149 PSIG		
MIN./MAX. DESIGN TEMP.	40F-100F (70° IDEAL)		
VESSEL OPENING SCHEDULE			
MK. NO.	SIZE	TYPE	REMARKS
N1	*	*	INLET
N2	*	*	OUTLET
N3	3/4"	FNPT	VENT, 1/2" BALL VALVE
N4	1"	FNPT	CLEAN DRAIN, 1" BALL VALVE
N5	1"	FNPT	DIRTY DRAIN, 1" BALL VALVE
N6/N7	1/2"	FNPT	DPI
N8/N9	1/2"	FNPT	TEST PT., 1/2" BALL VALVE

REPLACEMENT CARTRIDGE				
STAGE	PART NUMBER	QTY. (900)	QTY. (1200)	QTY. (1500)
1	BCC39QPRE	3	4	5
2	BCC39QPOL	3	4	5
3	BCC39QPOL	3	4	5



MODEL NUMBER					
BOX 1 MODEL CODE	BOX 2 SEALS	BOX 3 INLET PORTING	BOX 4 OUTLET PORTING	BOX 5 STAGE 1 INDICATOR	BOX 6 TEST POINTS
BCC900	V=VITON	P48=3" NPT A48=3" ANSI 150# FLANGE	P48=3" NPT A48=3" ANSI 150# FLANGE	OMIT=NONE RD5=VISUAL POP-UP DPG1=DIFFERENTIAL PRESSURE GAUGE RMS10=ELECTRICAL W/DIN CONNECTOR (MALE END ONLY)	OMIT=NONE UU=TEST POINTS IN EACH STAGE
BCC1200					
BCC1500					



**Filter
Model
Number
Selection**

How to Build a Valid Model Number for a Schroeder BCC900:



Example: NOTE: One option per box



BOX 1	BOX 2	BOX 3	BOX 4
Filter Series	Seals	Inlet Porting	Outlet Porting
BCC900	V = Viton®	P48 = 3" NPT A48 = 3" ANSI 150# Flange	P48 = 3" NPT A48 = 3" ANSI 150# Flange

BOX 5
Dirt Alarm®
Omit = None
RD5 = Visual Pop-up
DPG1 = Differential Pressure Gage
RMS10 = Electrical w/ DIN connector (male end only)

BOX 6
Test Points
Omit = None
UU = Test Points in all housings

NOTES:

Box 2. Viton® is a registered trademark of DuPont Dow Elastomers

**Replacement
Cartridges**

Stage 1 Cartridge:	BCC39QPRE
Stage 2 & 3 Cartridges:	BCC39QPOL