

Applications



POINT OF USE FUEL DISPENSING



FLEET FILL / BULK FUEL TRANSFER



BULK FUEL UNLOADING



PROTECTION FOR HIGH-FLOW FUEL INJECTION SYSTEMS



BULK TANK KIDNEY LOOP / RECIRCULATION

Features and Benefits

- Designed with integrated particulate removal pre-filtration for maximum coalescing filter element life in the downstream housing
- Sized for high flow or highly contaminated fluid applications
- Routine element change is only needed on Pre-filter (the particulate filter) which saves time and money
- Patent-pending, three-phase, particulate and fuel/water separation media technology
- A revolutionary element designed for the highest single-pass water and particulate removal efficiencies in today's ultra-low sulfur diesel (ULSD) fluids
- Protects expensive Tier 3 and Tier 4 engine components against failures caused by particulate and water transferred from the bulk fuel tank to the vehicle
- Allows users to achieve or exceed the particulate and water removal specifications of the injection system OEMs
- Previously acceptable industry standard products no longer provide the high-efficiency separation needed in today's ULSD fluids
- In applications >32°F (0°C) complete automation is achievable with a water in fuel sensor and fail-safe auto-drain feature using a remote 5 gallons (18L) or 20 gallons (75L) sump with alarm and auto shutdown
- Schroeder Anti-Static Pleat Media (ASP®) is standard for all coalescing elements



Model no. of filter in photograph is: BDS39QPMLZ3VVM

Markets



INDUSTRIAL



MOBILE VEHICLES



MARINE



MINING TECHNOLOGY



AGRICULTURE



POWER GENERATION



COMMON RAIL INJECTOR SYSTEMS



FLEET



RAILROAD



BULK FUEL FILTRATION

70 gpm ICF
265 L/min BDF

100 psi BDFA
7 bar BDA

BDA

QCF

BDS

BDS2

BDS3

BDS4

LVH-F

LVH-C

BDFC

BDC

HDP

HDPD

EPM

EPTT

EWU

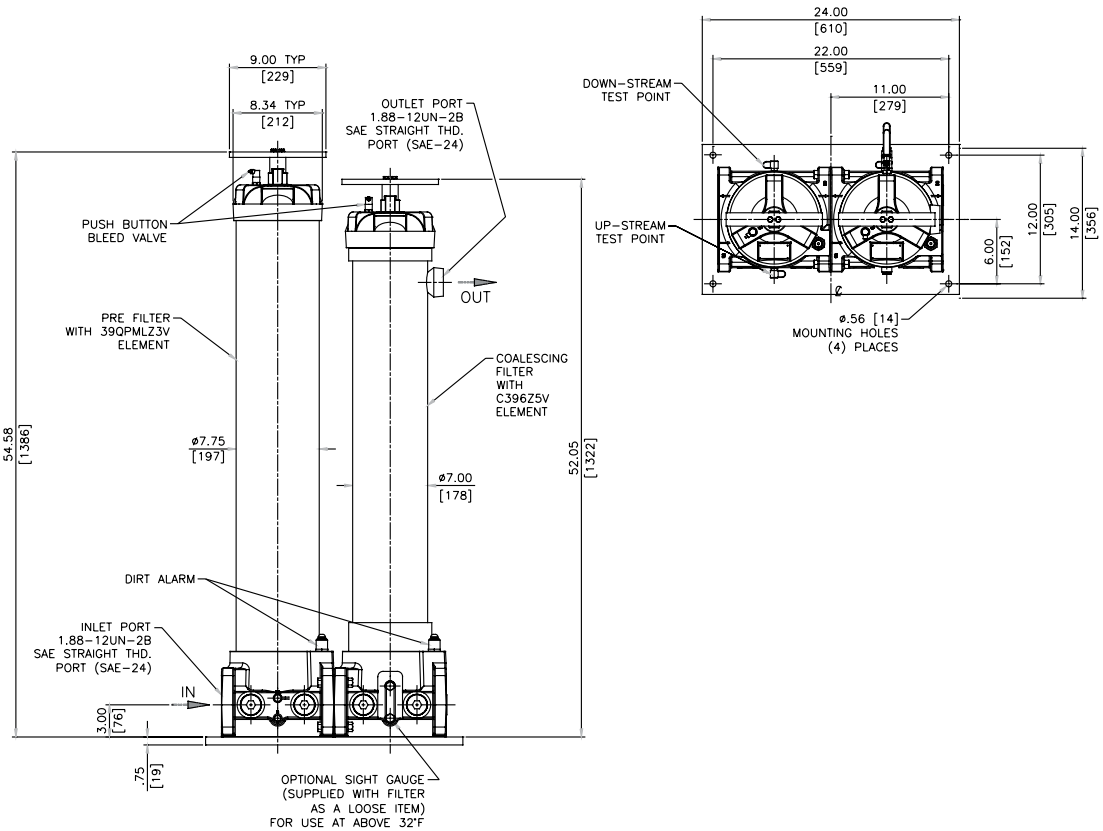
BCC

Filter Housing Specifications

Flow Rating:	Up to 70 gpm (265 L/min) for ULSD15	
Inlet/Outlet Connection:	-24 (ORB) SAE J1926	
Drain Connection Upper:	1/4" NPT Ball Valve	
Drain Connection Lower:	1/4" NPT Ball Valve	
Max. Operating Pressure:	100 psi (7 bar)	
Min. Yield Pressure:	400 psi (27.6 bar) without sight gauge Contact factory for yield pressure rating with sight gauge	
Rated Fatigue Pressure:	Contact Factory	
Temperature range:	-20°F to 165°F (-29°C to 74°C) sump heater option 32°F to 165°F (0°C to 74°C) standard or AWD option	
Bypass Indication: (Lower indication options available)	<u>Particulate Filter</u> Particulate: 15 psi (1.03 bar)	<u>Coalescing Filter</u> Coalescing: 25 psi (1.7 bar)
Bypass Valve Cracking:	<u>Particulate Filter</u> Particulate: 20 psi (1.37 bar)	<u>Coalescing Filter</u> Coalescing: 30 psi (2 bar)
Materials of Construction:	<u>Particulate Filter</u> Porting Base: Anodized Aluminum	<u>Coalescing Filter</u> Porting Base: Anodized Aluminum
	Element Bowl: Epoxy Paint w/ High-phos Electroless Nickel Plating (Standard)	Element Bowl: Epoxy Paint w/ High-phos Electroless Nickel Plating (Standard)
	Cap: Plated Steel	Cap: Plated Steel
Weight:	441 Lbs. (200 kg)	
Element Change Clearance:	33.8" (858 mm)	

NOTES:

Elements are sold with the housing



Metric dimensions in ().

Filtration Ratio per ISO 16889
Using APC calibrated per ISO 11171

Particulate Elements	DHC	$\beta_x (c) \geq 200$	$\beta_x (c) \geq 1000$
39QPMLZ1V	1485 grams	<4.0	4.2
39QPMLZ3V	1525 grams	<4.0	4.8

Coalescing Element	Pressure Side Coalescing	
	Max Flow	Single Pass Water Removal Efficiency
C396Z5V	70 gpm	$\geq 99.5\%$

Note: Based on ULSD15 with 27 Dynes/cm surface tension and 0.25% (2500 ppm) water injection

Particulate Element

Flow Direction: Outside In
Element Nominal Dimensions: 6.0" (150 mm) O.D. x 37.80" (960 mm) long

Coalescing Element

Flow Direction: Inside Out
Element Nominal Dimensions: 6.4" (163 mm) O.D. x 39.4" (1001 mm) long

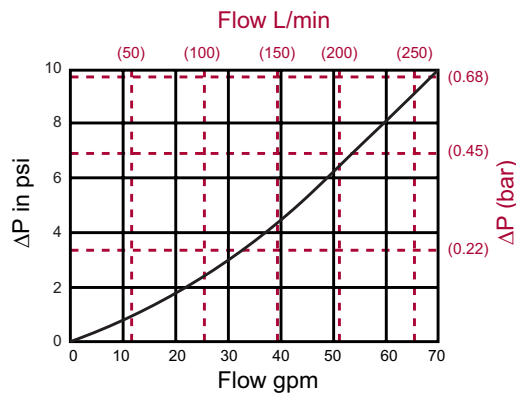
Element Particulate Performance Information

Element Coalescing Performance Information
Elements Sold with Housing

Highlighted product eligible for QuickDelivery

$\Delta P_{\text{housing}}$

BDS $\Delta P_{\text{housing}}$ for fluids with sp gr = 0.86



sp gr = specific gravity

Notes

$\Delta P_{\text{element}}$

$\Delta P_{\text{element}} = \text{flow} \times \text{element } \Delta P \text{ factor} \times \text{viscosity factor}$

El. ΔP factors @ 37 SUS (3 cSt).

C396Z5V = .17
39QPMLZ1V = .01
39QPMLZ3V = .01

If working in units of bars & L/min, divide above factor by 54.9.

Viscosity factor: Divide viscosity by 37 SUS (3 cSt).

$$\Delta P_{\text{filter}} = \Delta P_{\text{housing}} + \Delta P_{\text{element}}$$

Exercise: Determine ΔP at 70 gpm (265 L/min) for BDS39QPMLZ3VVM

Solution:

$$\Delta P_{\text{housing}} = 10 \text{ psi} = [0.69 \text{ bar}]$$

$$\Delta P_{\text{element (39QPML)}} = 70 \times 0.01 = 0.7 \text{ psi} [.05 \text{ bar}]$$

$$\Delta P_{\text{element (C396)}} = 70 \times 0.17 = 11.9 \text{ psi} [.82 \text{ bar}]$$

$$\Delta P_{\text{total}} = 10 + 0.7 + 11.9 = 22.6 \text{ psi} [1.56 \text{ bar}]$$

Pressure Drop Information
Based on Flow Rate and Viscosity

Filter Model Number Selection

How to Build a Valid Model Number for a Schroeder BDS supplied with coalescing element:



Example: NOTE: One option per box



BOX 1	BOX 2	BOX 3	BOX 4
Filter Series	Particulate Filter Micron Rating	Housing Seal Material	Dirt Alarm®
BDS	39QPMLZ1 = 1µm 39QPMLZ3 = 3µm	V = Viton®	VM = Visual Pop-Up w/ Manual Reset

BOX 5
Additional Options
Omit = None (standard)
H = Sump Heater
S = Sight Gauge
AWD5 = Auto water drain 5 gal tank w/ failsafe
AWD20 = Auto water drain 20 gal tank w/ failsafe
C = Cla-Val® Flow Control Valve (2" ANSI 150# flange)

NOTES:

Optional AWD for use only >32° F (0°C)
 Box 4. Viton® is a registered trademark of DuPont Dow Elastomers

Element Part Number Selection

Highlighted product eligible for **QuickDelivery**

Particulate Elements	DHC	Filtration Ratio per ISO 16889 Using APC calibrated per ISO 11171	
		$\beta_x (c) \geq 200$	$\beta_x (c) \geq 1000$
39QPMLZ1V	1485 grams	<4.0	4.2
39QPMLZ3V	1525 grams	<4.0	4.8

Coalescing Element	Pressure Side Coalescing	
	Max Flow	Single Pass Water Removal Efficiency
C396Z5V	70 gpm	≥ 99.5%

Note:

Based on ULSD15 with 27 Dynes/cm surface tension and 0.25% (2500 ppm) water injection

Particulate Element

Flow Direction: Outside In
 Element Nominal Dimensions: 6.0" (150 mm) O.D. x 37.80" (960 mm) long

Coalescing Element

Flow Direction: Inside Out
 Element Nominal Dimensions: 6.4" (163 mm) O.D. x 39.4" (1001 mm) long

Fluid Compatibility

Fuel Oils

- ULSD15, low sulfur diesel and high sulfur diesel
- Biodiesel blends
- Synthetic diesel and blends
- No. 2 fuel oil and heating oil