

Tank-Mounted Magnetic Suction Separators

BFT-SKB

ST

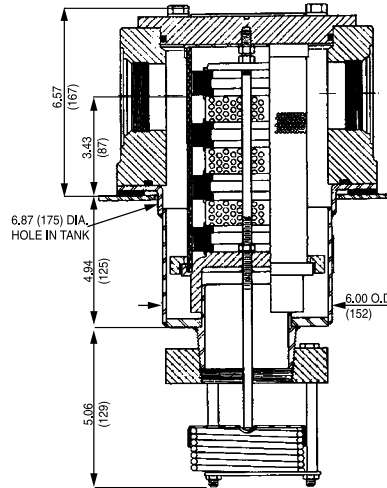
TF-SKB

KF3-SKB

BFT-SKB

Features and Benefits

- Protects components downstream by capturing potentially harmful ferrous particles



Metric dimensions in ().

Specifications

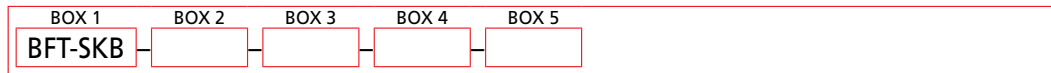
Flow Rating: 75 gpm (285 L/min)

Element Replacement with check valve: A-SKB-3-76
Part Number: without check valve: SKB-3

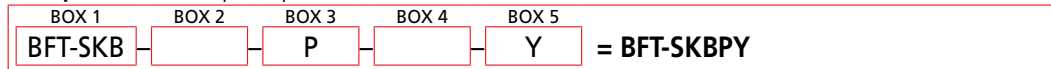
Element Change Clearance: 13.5" (345 mm)

Weight of BFT-SKB: 32.0 lbs (14.5 kg)

How to Build a Valid Model Number for a Schroeder BFT-SKB::



Example: NOTE: One option per box



BOX 1	BOX 2	BOX 3	Box 4
Filter Series	Seal Material	Porting	Other Options
BFT-SKB	Omit = Buna N	P = 2½" NPTF PP = Dual 2½" NPTF F = 2½" SAE 4-bolt flange Code 61 FF = Dual 2½" SAE 4-bolt flange Code 61	Omit = None C = Check Valve

BOX 5	
Dirt Alarm® Options	
	Omit = None
Visual	Y = Vacuum gauge YR = Vacuum gauge mounted on opposite side of standard location
Electrical	VS = Electrical Vacuum Switch VSR = Electrical Vacuum Switch on opposite side of standard location VS1 = Heavy-Duty Vacuum Switch

Filter Model Number Selection

NOTE:
Box 1. See specifications on previous page for element replacement part numbers.