

72 - 31,476 SCFM

5000 psi - 345 bar

CGF50



Description

For the gas compression manufacturers and designers who are seeking a cost effective filtration solution, the CGF50 is a high pressure compressed gas filter that provides robust and reliable filtration at a competitive price. Unlike other compressed gas filters, the CGF50 relies on a pleated media construction for a higher efficiency and greater dirt holding capacity

Features and Benefits

- SG Cast Iron construction with electroless nickel plating and epoxy painted exterior provide superior corrosion resistance and durability in outdoor installations.
- Radial bowl-to-head seal ensures reliable sealing that is not sensitive to variations in bowl torque.
- Integral threaded mounting holes on the top of the filter head allow for flexibility in mounting and plumbing.
- Engraved flow direction arrow and laser engraved data tag provide durable markings for clear identification through the life of the installation.
- SAE -6 O-Ring Boss drain plug is standard for all housing sizes.
- Upstream and downstream test points available.

Applications



Point of Use Fuel Dispensing



Fleet Fill / Bulk Fuel Transfer



Bulk Fuel Unloading



Protection for High-Flow Fuel Injection Systems



Virtual Pipelines

Markets



INDUSTRIAL



MOBILE VEHICLES



MINING TECHNOLOGY



AGRICULTURE



POWER GENERATION



COMMON RAIL INJECTOR SYSTEMS



FLEET



BULK FUEL FILTRATION

Filter Housing Specifications

Porting Size	1/4" through 2" NPTF, -4 through -32 SAE O-Ring Boss
Maximum Pressure	5000 psig (345 bar)
Min/Max Temperature	-20°F - 300°F (-28.9°C - 148.9°C)
Filtration Rating	0.01 µm 0.5 µm, 100 µm
Filter Media Type	Pleated Coalescing, Stainless Steel Water Separator
Housing Material	Head: SG Cast Iron Head Housing: Nickel-Plated Steel
Sealing Material	FKM (Viton®)

High Pressure Compressed Gas Filter

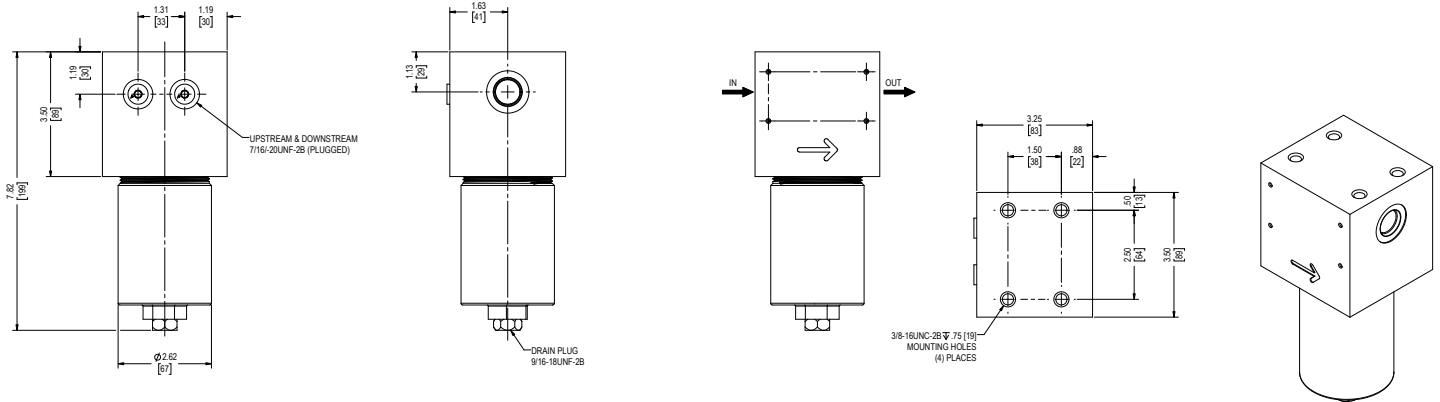
CGF50

Flow Rates (SCFM)

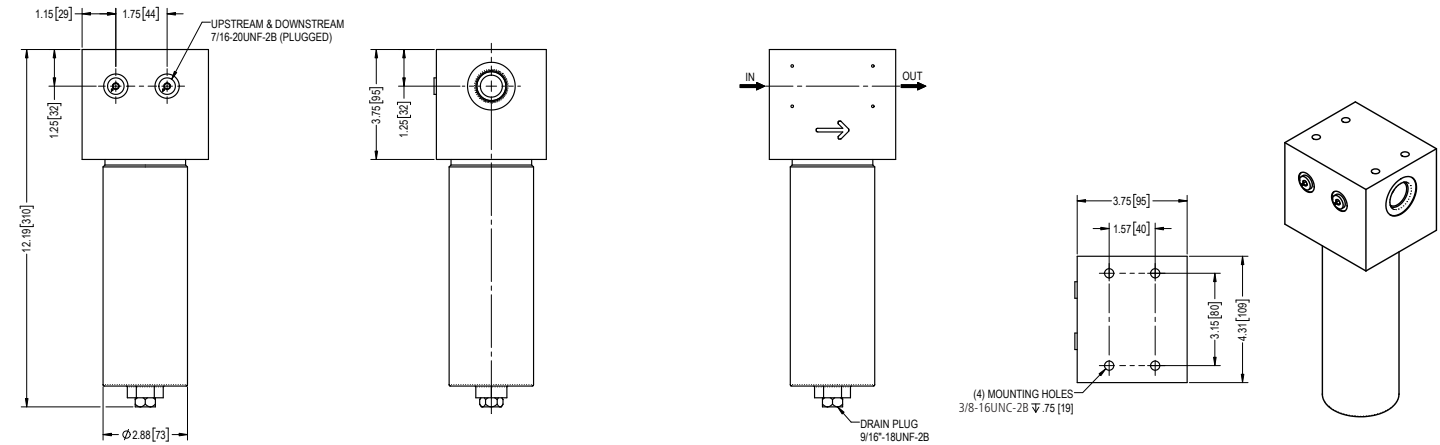
Model	Port Size	Element	100 PSIG	1000 PSIG	1500 PSIG	2000 PSIG	2500 PSIG	3000 PSIG	3500 PSIG	4000 PSIG	4500 PSIG	5000 PSIG
CGF5009	3/4" (P12 or S12)	PC0.01	72	636	948	1266	1578	1890	2208	2520	2832	3030
CGF5009	3/4" (P12 or S12)	PC0.5 or WS100	156	1380	2058	2742	3420	4098	4782	5460	6138	6822
CGF5009	3/4" (P12 or S12)	WS100	156	1380	2058	2742	3420	4098	4782	5460	6138	6822
CGF5010	1" (P16 or S16)	PC0.01	108	954	1428	1896	2370	2838	3312	3780	4248	4722
CGF5010	1" (P16 or S16)	PC0.5 or WS100	240	2124	3168	4218	5262	6306	7356	8400	9444	10494
CGF5010	1" (P16 or S16)	WS100	240	2124	3168	4218	5262	6306	7356	8400	9444	10494
CGF5013	1 1/2" (P24 or S24)	PC0.01	216	1908	2850	3792	4734	5676	6618	7560	8502	9444
CGF5013	1 1/2" (P24 or S24)	PC0.5 or WS100	480	4248	6336	8430	10524	12618	14706	16800	18894	20988
CGF5013	1 1/2" (P24 or S24)	WS100	480	4248	6336	8430	10524	12618	14706	16800	18894	20988
CGF5017	2" (P32 or S32)	PC0.01	330	2922	4356	5796	7236	8676	10110	11550	12990	14430
CGF5017	2" (P32 or S32)	PC0.5 or WS100	720	6372	9510	12648	15786	18924	22062	25200	28338	31476
CGF5017	2" (P32 or S32)	WS100	720	6372	9510	12648	15786	18924	22062	25200	28338	31476

Note: These rates are based on CNG. For compressed air, flow decreases by a factor of 1.2

Size 05



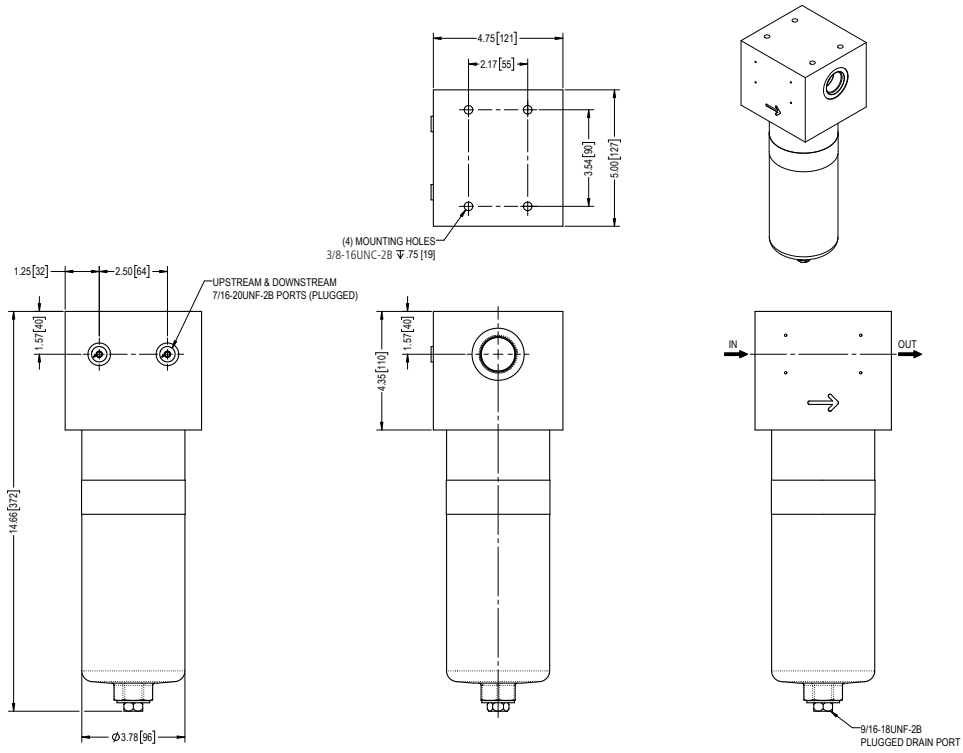
Size 09



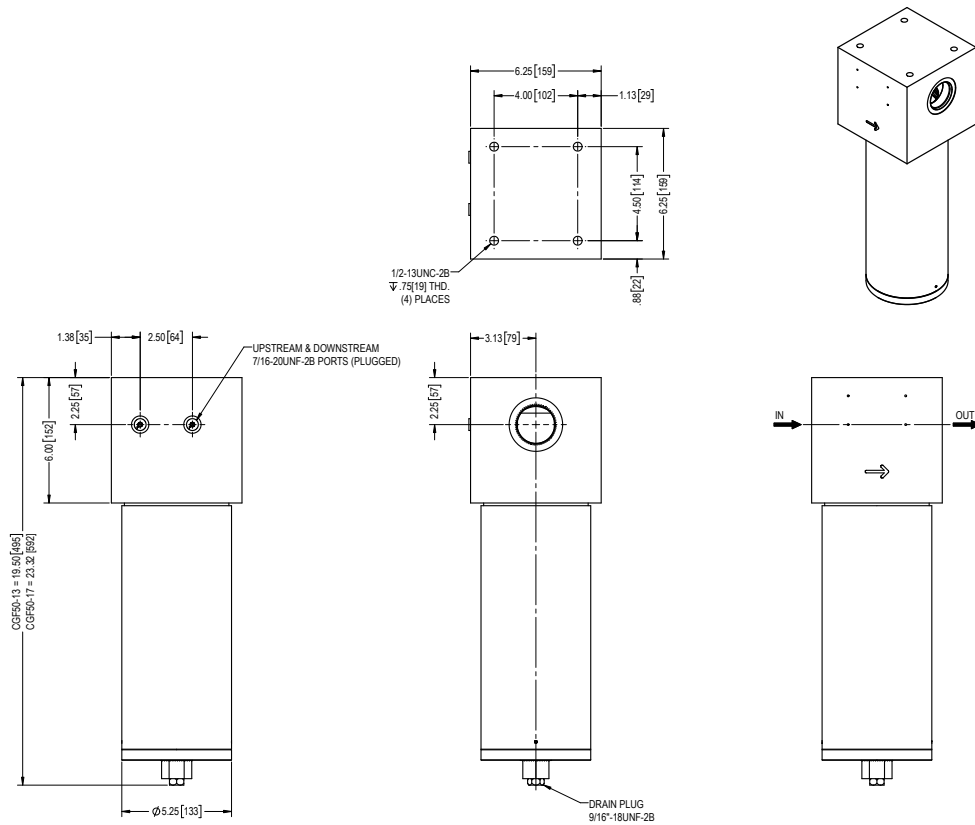
High Pressure Compressed Gas Filter

CGF50

Size 10



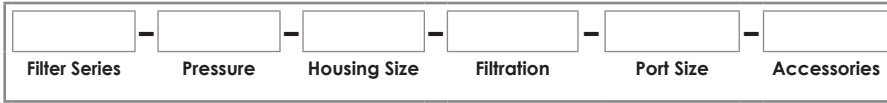
Size 13 & 17



High Pressure Compressed Gas Filter

CGF50

How to Build a Valid Model Number for a Schroeder CGF50:



Filter Series

CGF = Compressed Gas Filter

Pressure

50 = 5000 psig (345 bar) Maximum pressure

Housing Size

05 = 5" Element Length

09 = 9" Element Length

10 = 10" Element Length

13 = 13" Element Length

17 = 17" Element Length

Filtration

PC0.01 = Pleated Coalescing, 0.01 µm

PC0.5 = Pleated Coalescing, 0.5 µm

SWS100 = Stainless-Steel Water Separator, 100 µm

Port Size

P4 = 1/4" NPTF (Size 05 Only)

S4 = -4 SAE O-Ring Boss (Size 05 Only)

P8 = 1/2" NPTF (Size 05 & 09)

S8 = -8 SAE O-Ring Boss (Size 05 & 09)

P12 = 3/4" NPTF (Size 09 Only)

S12 = -12 SAE O-Ring Boss (Size 09 Only)

P16 = 1" NPTF (Size 10 Only)

S16 = -16 SAE O-Ring Boss (Size 10 Only)

P24 = 1 1/2" NPTF (Size 13 Only)

S24 = -24 SAE O-Ring Boss (Size 13 Only)

P32* = 2" NPT (Size 17 Only)

S32* = -32 SAE O-Ring Boss (Size 17 Only)

Accessories

N = None

H = Horizontal Drain Kit

V = Vertical Drain Kit

D = Differential Pressure Gauge Kit

NOTE: Replacement element part is a combination of Housing Size & Filtration