

211-1035 SCFM

800 psi - 55 bar

CGF8


Description

For the gas compression manufacturers and designers who are seeking a cost effective filtration solution, the CGF8 is a high pressure compressed gas filter that provides robust and reliable filtration at a competitive price. Unlike other compressed gas filters, the CGF8 relies on a pleated media construction for more reliable performance and greater capacity.

Features and Benefits

- Sand Cast Head with Aluminum Body. Anodized plating and epoxy painted exterior provide superior corrosion resistance and durability in outdoor installations.
- Radial bowl-to-head seal ensures reliable sealing that is not sensitive to variations in bowl torque.
- Integral threaded mounting holes on the top of the filter head allow for flexibility in mounting and plumbing.
- Engraved flow direction arrow and laser engraved data tag provide durable markings for clear identification through the life of the installation.
- SAE -6 O-Ring Boss drain plug is standard for all housing sizes simplifying factory or field installation of drain kits.
- Upstream & downstream test points available.

Applications



Point of Use Fuel Dispensing



Fleet Fill / Bulk Fuel Transfer



Bulk Fuel Unloading



Protection for High-Flow Fuel Injection Systems



On-Board Fuel Filtration

Markets



INDUSTRIAL



MOBILE VEHICLES



MINING TECHNOLOGY



AGRICULTURE



POWER GENERATION



COMMON RAIL INJECTOR SYSTEMS



FLEET



BULK FUEL FILTRATION

Filter Housing Specifications

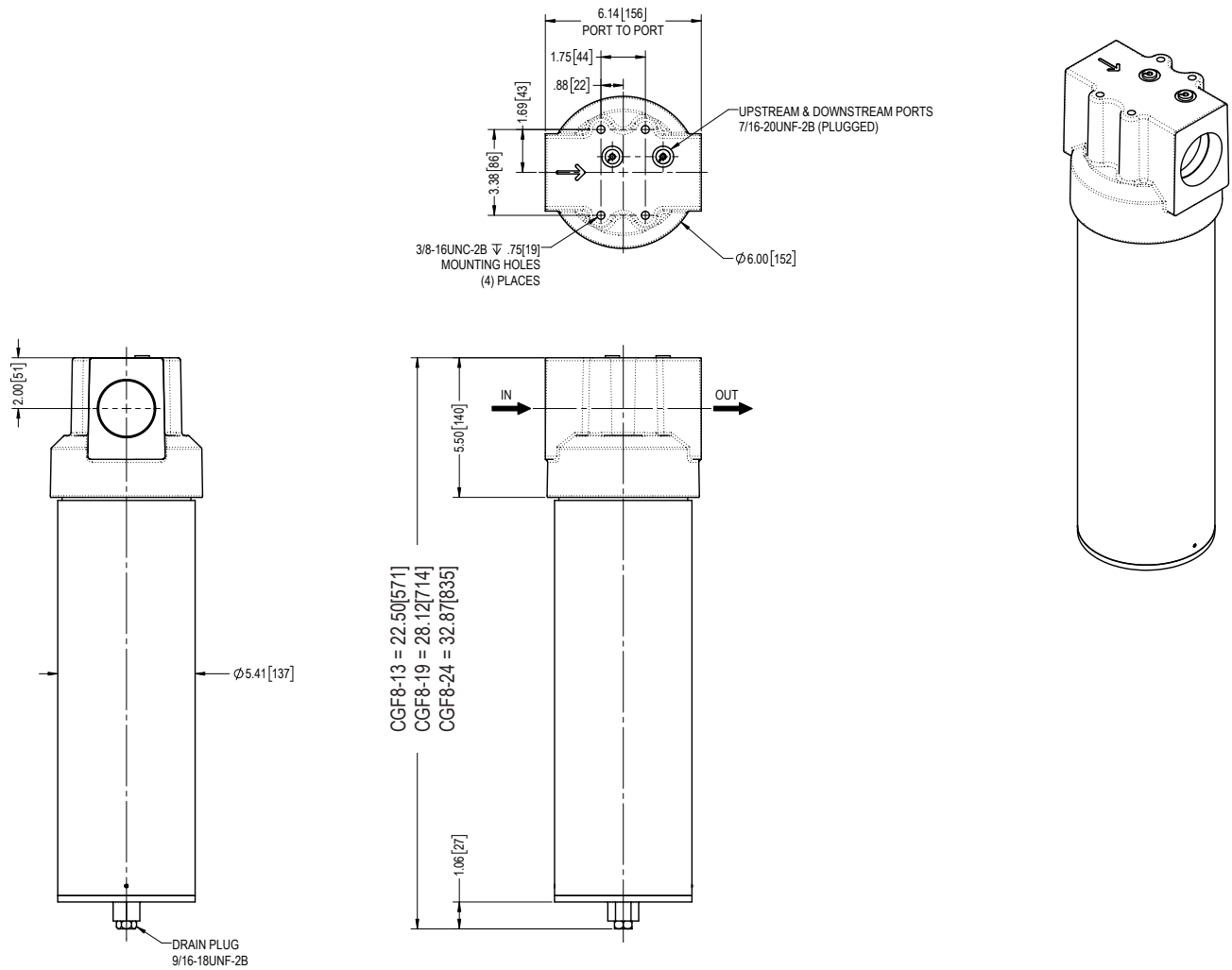
Porting Size	1 ½" NPTF, SAE-24 ORB, 2" NPTF, SAE-32 ORB
Maximum Pressure	800 psi (55 Bar)
Min/Max Temperature	32°F - 230°F (0°C - 110°C)
Filtration Rating	0.01 µm, 0.5 µm, 100 µm
Filter Media Type	Pleated Coalescing, Stainless Steel Water Separator
Housing Material	Sand Cast Head with Aluminum Body. Anodized plating epoxy painted exterior.
Sealing Material	FKM (Viton®)

High Pressure Compressed Gas Filter

CGF8

Housing Selection Chart - Rated Flows: SCFM @ 100PSIG and 70°F

Element	CGF8-13	CGF8-13	CGF8-19	CGF8-19	CGF8-24	CGF8-24
	Air	CNG	Air	CNG	Air	CNG
PC0.01	260	211	340	276	470	382
PC0.5 or WS100	600	487	750	609	1035	841
WS100	600	487	750	609	1035	841



High Pressure Compressed Gas Filter

CGF8

How to Build a Valid Model Number for a Schroeder CGF8:

<input type="text"/>	-	<input type="text"/>	-	<input type="text"/>	-	<input type="text"/>	-	<input type="text"/>	-	<input type="text"/>
Filter Series		Pressure		Housing Size		Filtration		Port Size		Accessories

Filter Series

CGF = Compressed Gas Filter

Pressure

8 = 800 psi

Housing Size

13 = 13" Element Length

19 = 19" Element Length

24 = 24" Element Length

Filtration

PC0.01 = Pleated Coalescing, 0.01 µm

PC0.5 = Pleated Coalescing, 0.5 µm

SWS100 = Stainless-Steel Water Separator, 100 µm

Port Size

P24 = 1 1/2" NPTF (Size 13 Only)

S24 = -24 SAE O-Ring Boss (Size 13 Only)

P32 = 2" NPT

S32 = -32 SAE O-Ring Boss

Accessories

N = None

H = Horizontal Drain Kit

V = Vertical Drain Kit

D = Differential Pressure Gauge Kit

NOTE: Replacement element model code is "2.5x" followed by Housing Size & Filtration.