

# Schroeder Check Test Point System



- Schroeder Pressure Test Kits are available in four configurations as shown below. Highest quality components were selected for versatility and long service life. Contents of each kit are listed below.
- The optional gauge range should be specified using the order code shown above.  
For example: UB102-1-2 specifies one (1) 100 psi gauge and one (1) 200 psi

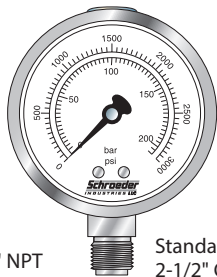
UB101-(* )	UB102-(* )-(* )	UB103-(* )-(* )-(* )	UB106-(* )-(* )-(* )-(* )-(* )-(* )
1 U401 Gauge (* )	2 U401 Gauges (* )-(* )	3 U401 Gauges (* )-(* )-(* )	6 U401 Gauges (* )-(* )-(* )-(* )-(* )-(* )
1 Microflex Hose 36"	2 Microflex Hoses 36"/72"	3 Microflex Hoses 12"/36"/72"	6 Microflex Hoses, 2x12"/2x36"/2x72"
1 Hose Joiner	1 Hose Joiner	1 Hose Joiner	3 Hose Joiners
1 (Hose) Gauge Adapter	1 (Hose) Gauge Adapter	1 (Hose) Gauge Adapter	3 (Hose) Gauge Adapters
1 Direct Gauge Adapter	1 Direct Gauge Adapter	1 Direct Gauge Adapter	3 Direct Gauge Adapters
3 Schroeder Check Test Points:	6 Schroeder Check Test Points:	6 Schroeder Check Test Points:	12 Schroeder Check Test Points:
1 ea. 1/4" NPT	2 ea. 1/4" NPT	2 ea. 1/4" NPT	4 ea. 1/4" NPT
1 ea. 7/16" UNF	2 ea. 7/16" UNF	2 ea. 7/16" UNF	4 ea. 7/16" UNF
1 ea. 9/16" UNF	2 ea. 9/16" UNF	2 ea. 9/16" UNF	4 ea. 9/16" UNF

Pressure test kits are also available with U400 all stainless steel gauges. Part numbers are U101-(\* ), U102-(\* )-(\* )...etc.



Custom Test Kits are designed for many special requirements. Utilizing components from Schroeder gauge and pressure test kits, these boxes are constructed for reliability and precision.

For additional information on custom test kits, please consult factory.



1/4" NPT  
Standard 2-1/2" Case

With the Schroeder Check System, one top quality gauge can do the work previously done by many. Compromising on low cost, short life gauges with questionable accuracy is no longer necessary. A series of precision instruments, Schroeder gauges are fluid filled with full scale accuracy of  $\pm 1.5\%$  (or better). Dual scale dial has a non-reflective white background and a high contrast matte black pointer. Cases and connections are stainless steel, internals are brass. Ideal for most liquids and gases under pressure or vacuum where contact with the liquid filling would not be hazardous. For additional applications, information, and pressure ranges, please consult the factory.

Part Number	Pressure	Order Code (needed for test kits)
U401-30/100-01*	30 in Hg VAC to 100 psi (6.9 bar)	0
U401-100-01	0 to 100 psi (6.9 bar)	1
U401-200-01	0 to 200 psi (13.8 bar)	2
U401-600-01	0 to 600 psi (41.2 bar)	6
U401-1000-01	0 to 1000 psi (70.0 bar)	10
U401-1500-01	0 to 1500 psi (103.0 bar)	15
U401-3000-01*	0 to 3000 psi (207.0 bar)	30
U401-5000-01	0 to 5000 psi (345.0 bar)	50
U401-6000-01*	0 to 6000 psi (414.0 bar)	60
U401-10000-01	0 to 10000 psi (689.0 bar)	100

\*Also available is U400-XXX-01 gauge, identical to U401 except with stainless steel internals.

Preferred order codes designate shorter lead times and faster delivery.

## Schroeder Pressure Test Kits

Test Points

Adapters

## Part Number

Hose Joiners

Microflex Hose

Pressure Limiters

## Schroeder Custom Test Kits

Test Kits

Pressure Gauges

## Pressure Gauges

GS

## Part Number

Reservoir Breather Fluid Sampling Adapter

Probalizer

# Multi-Gauge

## GS Multi-Gauge



P/N GS-5



P/N GS-6U

### Description

The Schroeder Multi-Gauge provides multiple pressure readings for hydraulic, transmission, and converter systems all in one compact enclosure. While one terminal connects all three gauges, the built-in gauge protector automatically protects the low and medium pressure gauges from high pressures. Each gauge is equipped with a high quality poppet valve. The Multi-Gauge is available with two types of connections: (1) the standard braided copper, flexible high pressure hose with male 1/8" pipe universal swivel fitting and (2) microbore flexhose and test point adapter (specified by U in the part number).

### Features

- Protects against overpressurization. The 150 psi gauge can not be damaged when a 2500 psi system is being checked. This design feature eliminates the need to know the pressure before testing.
- Simple yet rugged construction. The dust and moisture proof steel case is provided with a rubber bumper for shock protection. A hanger is also provided on the case back for the user's convenience.
- Compact and portable. The GS-5 and GS-6 models are 6-1/2" and 8-1/2" in diameter. The GS-5 fits easily into the average tool box for instant availability.
- Saves time. The three pressure ranges and one vacuum range provided in one case meet most routine hydraulic maintenance requirements.

### Specifications

	GS-5 & GS-5U	GS-6 & GS-6U
Case Diameter:	6.31 in (160 mm) O.D.	8.50 in (216 mm) O.D.
Gauge Diameter:	1.50 in (38 mm) O.D.	1.50 in (38 mm) O.D.
Approximate Weight:	3.25 lbs (1.47 kg)	4.5 lbs (2.0 kg)
Range:	Vacuum (30" Hg) to 5000 psi (345 bar)	Vacuum (30" Hg) to 6000 psi (3413 bar)
Case:	Steel with rubber bumper strip	Steel with rubber bumper strip
Vacuum Gauge:	30 in Hg	30 in Hg
Pressure Gauges:	0 to 150 psi (10 bar) 0 to 600 psi (41 bar) 0 to 5000 psi (345 bar)	0 to 300 psi (21 bar) 0 to 1000 psi (69 bar) 0 to 6000 psi (414 bar)

### Model Number Selection

How to Build a Valid Model Number for a Schroeder GS:

BOX 1	BOX 2
GS	

Example: ???

BOX 1	BOX 2
GS	5U

BOX 1	BOX 2
Model	Options
GS	5 Standard Multi-Gauge 5U Multi-Gauge with Microbore Flexhose and Test Point Adapter 6 Multi-Gauge with 2-1/2" Liquid Filled Gauges 6U Multi-Gauge with 2-1/2" Liquid Filled Gauges, Microbore Flexhose and Test Point Adapter