

On-Board Diesel Fuel Coalescing Filter

HDP

Applications

**INDUSTRIAL****MOBILE
VEHICLES****MARINE****AGRICULTURE****BULK FUEL
FILTRATION**

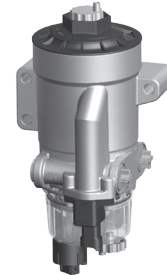
Application Introduction:

The Reason for Better Engine Filtration

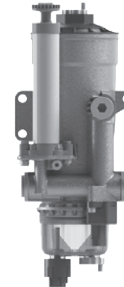
Mobile machines and commercial vehicles are subject to the toughest working conditions. To ensure smooth running of vehicles, and to protect both the engine and the drive system from damage, optimum diesel fuel conditioning is particularly important. Schroeder Fuel Filtration On-Board Diesel Coalescing filter offers a modern cartridge filter system design available in two configurations, in order to protect equipment operators from failures, breakdowns and expensive service interventions

Features and Benefits

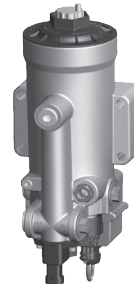
- Manual or Fully Automatic water drain
- Optional fuel pre-heater and Water-In-Fuel (WIF) sensor
- Small envelope size offers greater flexibility in mounting locations
- Low investment cost due to the economical design
- Long service life of the element yields low operating costs
- Easy installation due to various porting configurations
- Easy adaption to the on-board power supply
- Unsurpassed water removal for ULSD



Model No. of filter in photograph is:
HDP KF1 340 BC1 XX W 1.1 /-AS1-H2



Model No. of filter in photograph is:
HDP KF1 600 BC1 XX W 1.1 /-AS1-H2



Model No. of filter in photograph is:
HDP KF1 600 HT1 XX A 1.1 /-AS1-H2

Flow Rating:	up to 476 gph (up to 1800 lph)
Operating Pressure:	<14.5 psia, (<1 bar absolute) suction side application
Temperature Range:	BC: -40°F to 194°F (-40°C to 90°C) HT: -4°F to 194°F (-20°C to 90°C) *for extended ranges, contact factory
Nominal Voltage:	24V DC (12V DC is optional for heater or water sensor)
Rated Power Fuel Preheating:	300W
Weight of incl. Element:	340 BC: 5.1 lbs (2.3 kg) 600 BC: 6.8 lbs (3.1 kg) 600 HT: 9.4 lbs (4.25 kg) *other models available upon request
Water Separation Efficiency:	>95% to ISO CD 16332
Porting Thread:	340 BC: M22x1.5 600 BC: M27x2.0, SAE -12 ORB (optional) 600 HT: G 3/4" (BSPP)

up to **476 gph**
up to **1800 lph**

14.5 psia
1 bar absolute
Suction Side Application

GHCF

QCF

BDS

BDS2

BDS3

BDS4

LVH-F

LVH-C

BDFC

BDFP

BDC

HDP 240

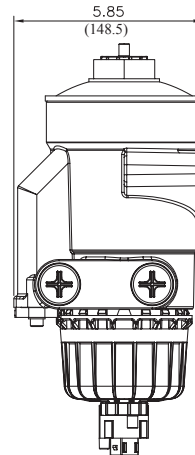
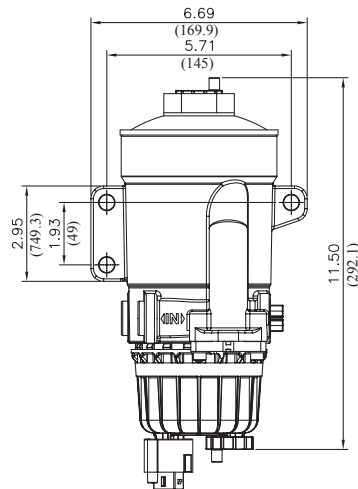
HDP

HDPD

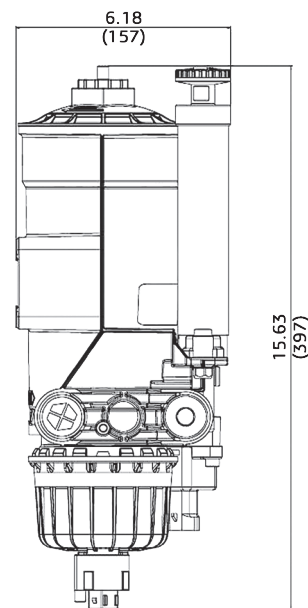
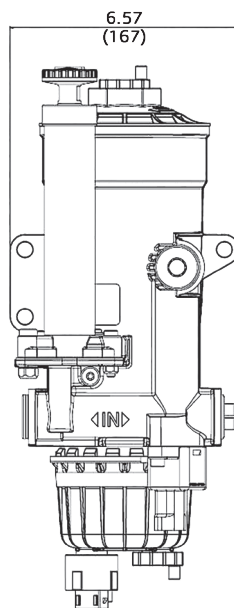
BCC

Filter Housing Specifications

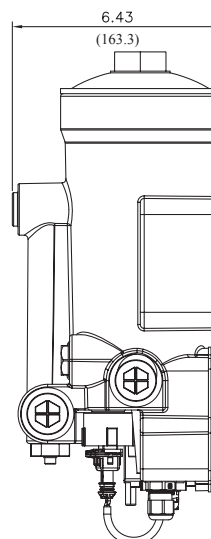
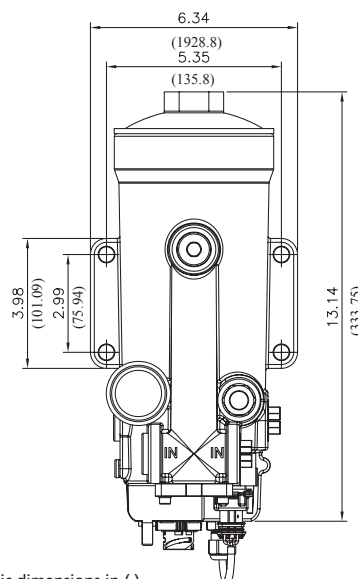
HDP KF1 340 BC1 - Manual Water Drain Version



HDP KF1 600 BC1 - Manual Water Drain Version



HDP KF1 600 HT1 - Automatic Water Drain Version



Metric dimensions in ().
Dimensions shown are inches (millimeters) for general information and overall envelope size only.
For complete dimensions please contact Schroeder Industries to request a certified print.

On-Board Diesel Fuel Coalescing Filter

HDP

Element Particulate Performance Information

Element Water Coalescing Performance Information

Note: Based on Diesel Fuel Type A, Water Concentration: 1500 ppm

Fluid Compatibility

Replacement Elements

Highlighted product eligible for **QuickDelivery**

Particulate Element	Filtration Ratio Per ISO 19438 n > 10 µm (c)	Dirt Retention Per ISO 19438 to DP
10 µm	> 99%	300 mbar m > 42g

Coalescing Element	Max Flow	Single Pass Water Removal Efficiency
10 µm	158 gal/h	> 95%

Flow Direction: Outside In
Element Nominal Dimensions: 3.8" (95.6 mm) O.D. x 7.0" (177.2 mm) long - 340 Size
3.8" (95.6 mm) O.D. x 9.4" (238.2 mm) long - 600 Size

Note: For additional HDP performance information, please contact the factory

Fuel Oils

- ULSD15 and similar petroleum diesels
- Biodiesel blends
- Synthetic diesel and blends

Note: For Flow and Pressure information, please contact the factory

Size	Evolution Stage	Filtration Rating	Filter Material
0340	BC1	7 = 7 µm	KF1
0600	HT1	10 = 10 µm 30 = 30 µm	

Filter Model Number Selection

Highlighted product eligible for **QuickDelivery**

How to Build a Valid Model Number for a Schroeder HDP Housing Supplied w/ Element:

BOX 1	BOX 2	BOX 3	BOX 4	BOX 5	BOX 6	BOX 7	BOX 8	BOX 9
HDP							.	/-

Example: NOTE: Only box 9 may contain more than one option

BOX 1	BOX 2	BOX 3	BOX 4	BOX 5	BOX 6	BOX 7	BOX 8	BOX 9
HDP	KF1	600	BC1	10	W	1	.	X

= HDP KF1 600 BC1 10 W 1.X

BOX 1	BOX 2	BOX 3	BOX 4	BOX 5
Filter Series	Filter Material	Size	Evolution Stage	Filtration Rating
HDP	KF1 = Dieselmicron®	340 = 90 gph 600 = 160 gph 1200 = 317 gph 1800 = 476 gph	BC1 = Manual Drain Configuration HT1 = Auto Drain Configuration	7 = 7 µm 10 = 10 µm 30 = 30 µm

BOX 6	BOX 7	BOX 8	BOX 9
Type of Clogging Indicator	Type Code	Modification Number	Options
W = no clogging indicator (340 & 600 BC only) A = blanking plug in indicator port (600 HT only) UED = vacuum gauge (600 HT only)	1	X = latest version number always supplied	Omit = None AS1 = w/ integrated water sensor (12/24 VDC) *standard on 600 HT H1 = w/integrated fuel pre-heating (12 VDC) H2 = w/ integrated fuel pre-heating (24 VDC) PH3 = Hand priming pump (600 BC only) PE1 = Integral Electric Pump 12 VDC (600 BC only) PE2 = Integral Electric Pump 24 VDC (600 BC only)

NOTES:

For other options or configurations not listed, please contact factory