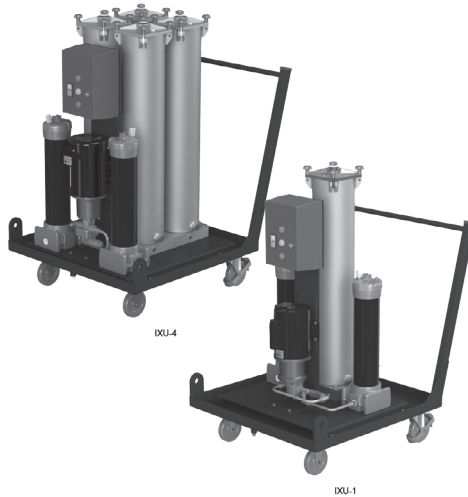


.5 -2.5 gpm
1.9-9.5
L/min



Features and Benefits

- Longer oil change intervals
- Increase in the lifetime of operating fluids and components
- Higher machine availability
- Reduction in functional problems, e.g. with servo valves
- Easy to service unit through
 - Component replacement without tools
 - Filter elements can be removed with the cover pointing “upward”
- Ideal to combine with type SVD Dewatering Units
- Available to service as complete unit, modular system for retrofitting existing bypass circuits or for OEM
- Visual Dirt Alarm® provided on all models
- Sold in North America only.

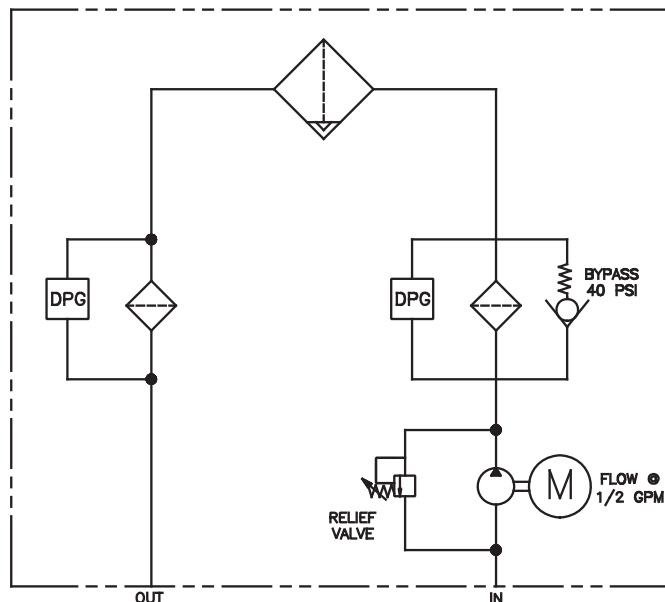
Applications

- Power plants
- Steel industry
- Other applications with ester-based, flame resistant fluids

Description

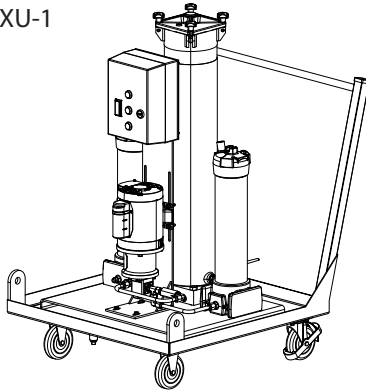
This easy to service ion exchange unit of the IXU series is used for conditioning flame resistant, HFD-R-based hydraulic and lubrication fluids. They effectively remove acidic products of decomposition caused by hydrolysis and/or oxidation of the fluid. The units are applied to hydraulic and lubrication oil tanks up to approximately 5,300 gallons (20,000 L) with volumetric flow of up to approximately 2.4 gpm (9 l/min) in the bypass flow. Mobile or stationary IXU are available. The IXU uses Ion eXchange Element (IXE) filled with ion exchange resin.

Hydraulic Circuit

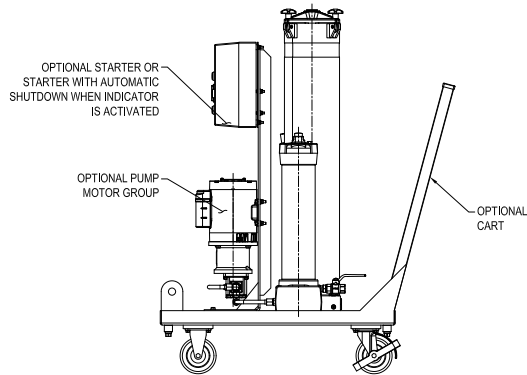
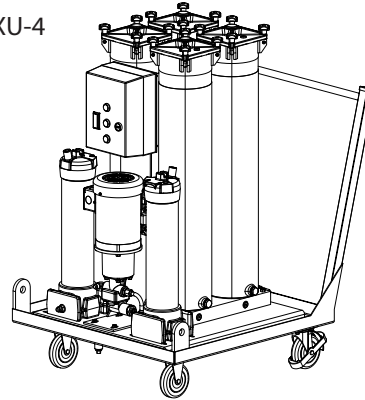


NOTES:
No connection lines
included

IXU-1



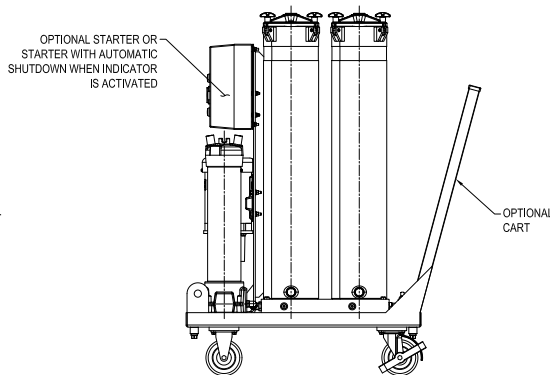
IXU-4



OPTIONAL STARTER OR
STARTER WITH AUTOMATIC
SHUTDOWN WHEN INDICATOR
IS ACTIVATED

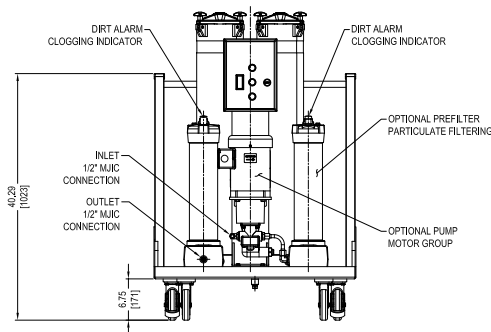
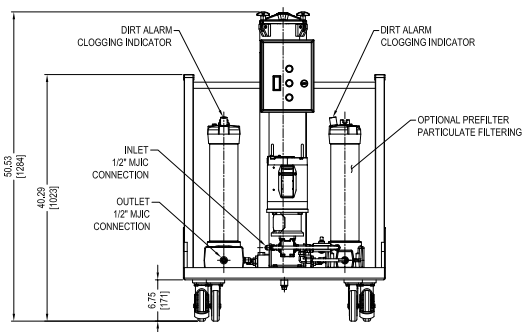
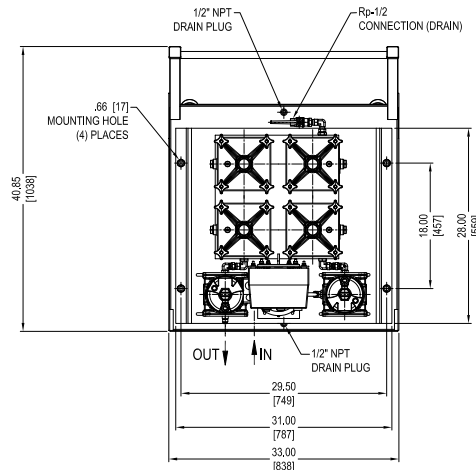
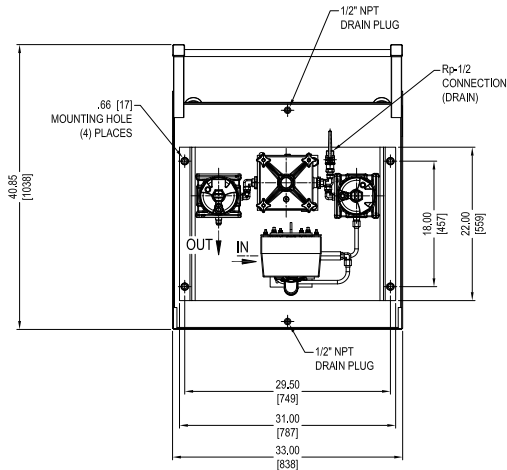
OPTIONAL PUMP
MOTOR GROUP

OPTIONAL
CART



OPTIONAL STARTER OR
STARTER WITH AUTOMATIC
SHUTDOWN WHEN INDICATOR
IS ACTIVATED

OPTIONAL
CART



CS 1000

CS 1939

CSI-C-11

HY-TRAX®

RBSA

CSM

FCU

MCS

AS

SMU

CTU

EPK

Trouble
Check Plus

HMG2500

HMG4000

ET-100-6

HTB

RFSA

HFS-BC

HFS-15

MFD-BC

MFS, MFD

HY-TRAX®
Retrofit System

MFD-MV

MFS-HV

AMS, AMD

FS

AMFS

KLS, KLD

KLCO

MCO

AKS, AKD

LSN, LSA, LSW

X Series

OLF Compact

OLF

OLF-P

NxTM

VEU-F

VMU

IXU

Triton-A

Triton-E

NAV

SVD01

OXS

Appendix

Specifications

Neutralization Number: < 0.1 mg KOH/g possible

Flow Rating: IXU-1: 0.5 gpm (1.9 l/min) IXU-4: 2.5 gpm (9.5 l/min)

Max. Operating Pressure: 116 psi (7.99 bar)

Suction Pressure @ Inlet: -5.8 to 14.5 psi (-0.4 to 1 bar)

Viscosity Range: 80 to 400 SUS (15 to 80 cSt)

Fluid Compatibility: HFD-R (Fire-Resistant / Phosphate-Based Fluids)

Operating Temperature: 32°F to 104°F (0 to 40°C) <80% = Relative humidity (non-condensing)

Hydraulic Connection: 1/2" (-8) Male JIC Inlet and Outlet

Seals: Viton®

Pump Type: Gear

Power Consumption: 0.25 - 0.6 kW, depending on motor and voltage

Length of Electrical Cable: 30 ft. (10 m)

Noise Level: <80 dB at 3 feet (1 m)

Storage Temperature: 32°F to 140°F (0°C to 60°C)

Model
Number
Selection

How to Build a Valid Model Number for a Schroeder IXU:

BOX 1	BOX 2	BOX 3	BOX 4	BOX 5	BOX 6	BOX 7	BOX 8	BOX 9
IXU								

Example: NOTE: One option per box

BOX 1	BOX 2	BOX 3	BOX 4	BOX 5	BOX 6	BOX 7	BOX 8	BOX 9
IXU	1	M	G	J	G10	C	G05	

= IXU1MGJG10CG05

BOX 1	BOX 2	BOX 3	BOX 4	BOX 5
Model	Flow Rate	Transport	Pump	Connection Voltage
IXU	1 = 0.5 gpm (1.9 l/min) 4 = 2.5 gpm (9.5 l/min)	M = Mobile S = Stationary	G = Gear Pump	Omit = 115 V / 60 Hz, 3 Phase B = 460 V / 60 Hz, 3 Phase E = 575 V / 60 Hz, 3 Phase

BOX 6	BOX 7	BOX 8
Pre-filter	Clogging Indicator	Post-filter
05 = w/ 5µm Element 10 = w/ 10µm Element G05 = 5 µm Excellement® Z-Media® (synthetic) w/GeoSeal® G10 = 10 µm Excellement® Z-Media® (synthetic) w/GeoSeal®	C = Differential Pressure Indicator – Electrical	05 = w/ 5µm element 10 = w/ 10µm element G05 = 5 µm Excellement® Z-Media® (synthetic) w/GeoSeal® G10 = 10 µm Excellement® Z-Media® (synthetic) w/GeoSeal®

BOX 9	
Accessories	
FA1 = with on/off switch, overload protective motor switch and cut-out when filter clogged (requires neutral wire in power supply)	FA2 = with on/off switch, overload protective motor switch and cut-out when filter clogged (does not require neutral wire in power supply)

Ion eXchange
Unit Replacement
Elements

Model Code	P/N	Description
IXE36-5.5	3348961	Standard Ion Exchange Resin Element
KKZ5V	7615359	5 Micron Pre/Post Element
KKZ10V	7628656	10 Micron Pre/Post Element

NOTES:

IonExchange Element is not included with unit and is to be ordered separately