

**KLS
KLD**

Kidney Loop Systems

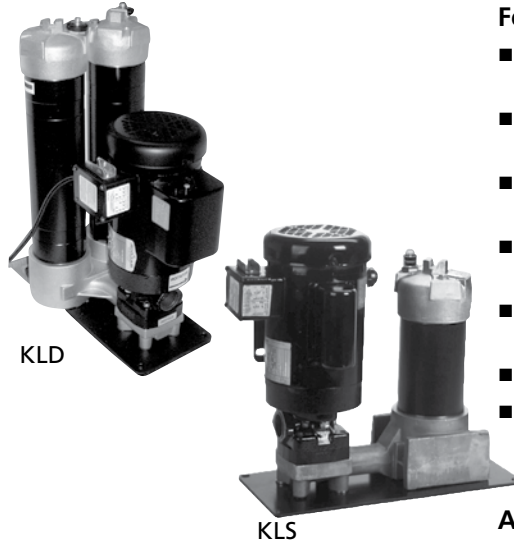
U.S. Patents 6568919 7604738

7 or 14 gpm
26.5 or 53 L/min



- Usable with FluMoS Mobile App - HY-TRAX® option only

**CSI-C-11
Compatible
Product**



Features and Benefits

- Single, double and triple bowl length option allows the flexibility of additional dirt-holding capacity
- Modular base eliminates connections between components and minimizes leakage
- Base-ported filter provides easy element service from the top cap
- D5 Dirt Alarm® indicates when filter element needs changed
- Two 7/16 – 20 UNF sampling port included on all models (upstream)
- Suction strainers to protect pump
- Optional CSI-C-11 Communication Interface for WLAN or LAN transmission of data and data storage capabilities

Applications

- Supplementing in-line filtration by system filters when adequate turnover cannot be attained
- Large volume systems requiring multiple filters in different locations
- Cleaning up a hydraulic system following component replacement

Description

Schroeder's off-line Kidney Loop System is a stationary version of the Mobile Filtration System. It is a compact, self-contained filtration system equipped with high efficiency, high capacity elements capable of removing particulate contamination and/or water quickly, conveniently and economically. This off-line system can be used to supplement in-line filters when adequate turnover cannot be achieved in the system. It is also ideal for free water removal. Like the Mobile Filtration System, the Kidney Loop System operates at a surprisingly low noise level. Its modular base eliminates hoses and fittings between components. The KLS single filtration unit can remove either water or particulate contamination. The KLD dual filtration unit can be used to remove both water and particulate contamination, or for staged particulate contaminant removal.

Contamination Sensor for Remote Visibility Options

HY-TRAX® manual fluid sampling system: Schroeder now offers the HY-TRAX® manual fluid sampling system as an additional option allowing for real-time fluid condition monitoring. ISO particle counts are visually displayed on the TCM. Users will now know when they have reached their desired ISO contamination levels. For more information, please see page 102.

CSI-C-11: Schroeder also offers the CSI-C-11 Communication Interface for WLAN or LAN transmission of data and data storage capabilities. For more information, please see page 38.

Specifications

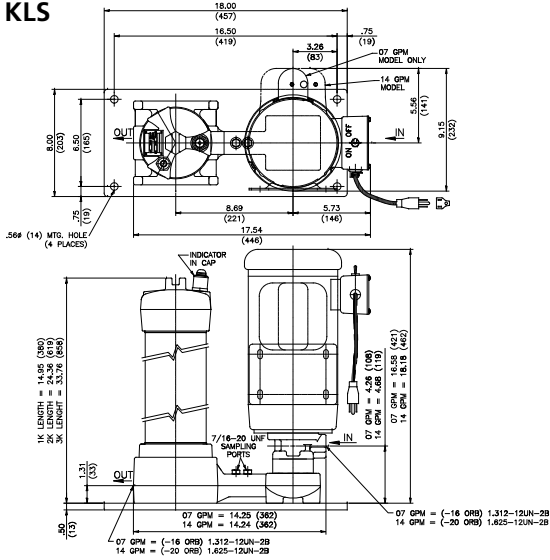
Flow Rating:	7 gpm (26.5 L/min) max and 14 gpm (53.0 L/min) max	
Viscosity Range:	40 - 1,000 SUS (4 - 216 cSt) Higher viscosity version available. Contact factory for details.	
Fluid Temperature:	25°F to 150°F (-4°C to 65°C)	
Bypass Valve Setting:	Cracking: 30 psi (2 bar)	
Material:	Manifold and cap: Cast aluminum Element case: Steel	
Compatibility:	All petroleum based hydraulic fluid. Contact factory for use with other fluids.	
Motor:	115 VAC single phase 3/4 hp (7 gpm), 1-1/2 hp (14 gpm), or 230 and 460 VAC 3 phase power optional	
Weight:	KLS-1: 101 lb (45.9 kg)	KLD-1: 117 lb (53.2 kg)
	KLS-2: 112 lb (50.9 kg)	KLD-2: 139 lb (63.2 kg)
	KLS-3: 123 lb (55.9 kg)	KLD-3: 161 lb (73.2 kg)
Element Change Clearance	8.50" (215 mm) 1K	

Kidney Loop Systems

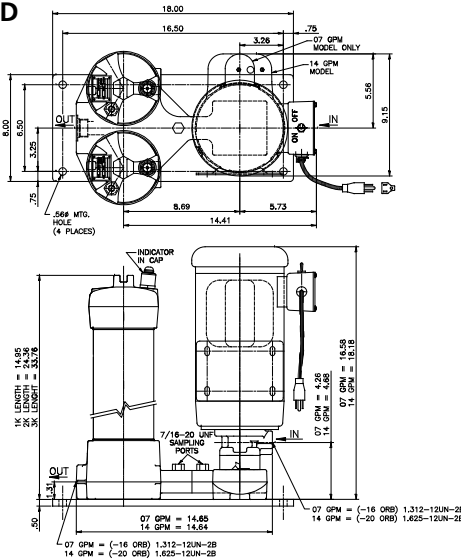
U.S. Patents 6568919 7604738



KLS

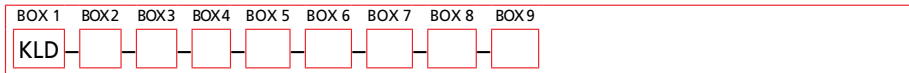


KLD

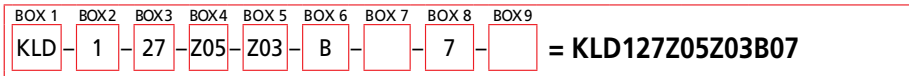


Metric dimensions in ().

How to Build a Valid Model Number for a Schroeder KLD:



Example: NOTE: One option per box



BOX 1	BOX 2	BOX 3	BOX 4
Model	No. of Elements	Element Length	Element Media First Filter
KLS	1	09	Z01 = 1 µm Excellement® Z-Media® (synthetic)
KLD	2	18	Z03 = 3 µm Excellement® Z-Media® (synthetic)
	3	27	Z05 = 5 µm Excellement® Z-Media® (synthetic)
			Z10 = 10 µm Excellement® Z-Media® (synthetic)
			Z25 = 25 µm Excellement® Z-Media® (synthetic)
			EWR = Water Removal
			G03 = 3 µm Excellement® Z-Media® (synthetic) w/GeoSeal®
			G05 = 5 µm Excellement® Z-Media® (synthetic) w/GeoSeal®
			G10 = 10 µm Excellement® Z-Media® (synthetic) w/GeoSeal®
			G25 = 25 µm Excellement® Z-Media® (synthetic) w/GeoSeal®
			GWR = Water Removal w/GeoSeal®

BOX 5
Element Media Second Filter (KLD only)
Z01 = 1 µm Excellement® Z-Media® (synthetic)
Z03 = 3 µm Excellement® Z-Media® (synthetic)
Z05 = 5 µm Excellement® Z-Media® (synthetic)
Z10 = 10 µm Excellement® Z-Media® (synthetic)
Z25 = 25 µm Excellement® Z-Media® (synthetic)
EWR = Water Removal
G03 = 3 µm Excellement® Z-Media® (synthetic) w/GeoSeal®
G05 = 5 µm Excellement® Z-Media® (synthetic) w/GeoSeal®
G10 = 10 µm Excellement® Z-Media® (synthetic) w/GeoSeal®
G25 = 25 µm Excellement® Z-Media® (synthetic) w/GeoSeal®
GWR = Water Removal w/GeoSeal®

BOX 6
Seal Material
B = Buna
V = Viton®

BOX 7
Voltage
Omit = 115 V / 60 Hz / 1-Phase
A = 230 V / 60 Hz / 3-Phase
B = 460 V / 60 Hz / 3-Phase
C = 220 V / 50 Hz / 1-Phase
D = 230 V / 60 Hz / 1-Phase

BOX 8
Pump Size
07
14

BOX 9
Particle Counter
Omit = Without Particle Counter
P = Particle Counter
P-CSI = Particle Counter + CSI-C-11 Option
P-CSI-W = Particle Counter + CSI-C-11 + Water Sensor (No Display) Option

Model Number Selection

Preferred order codes designate shorter lead times and faster delivery.

NOTES:

Box 2 & 3 . When Box 2 equals 2 or 3, Box 3 must be 09.

Box 5 . When KLD is ordered, the number of elements, element length, and seals will be identical for both filter housings.

Box 7. Motor starter is included with 3-Phase options A and B.

Box 9. Particle counter option only available on 115 V / 60 Hz units. Particle counter is not available with Skydrol fluids.

Contact factory if EPR seals are required. Contact factory for high viscosity version.

For replacement element P/Ns, please see "Appendix Section - Replacement Elements" of this catalog.

- CS 1000
- CS 1939
- CSI-C-11
- HY-TRAX®
- RBSA
- CSM
- FCU
- MCS
- AS
- SMU
- CTU
- EPK
- Trouble Check Plus
- HMG2500
- HMG4000
- ET-100-6
- HTB
- RFSA
- HFS-BC
- HFS-15
- MFD-BC
- MFS, MFD
- HY-TRAX® Retrofit System
- MFD-MV
- MFS-HV
- AMS, AMD
- FS
- AMFS
- KLS, KLD**
- MCO
- AKS, AKD
- LSN, LSA, LSW
- X Series
- OLF Compact
- OLF
- OLF-P
- NxTM
- VEU-F
- IXU
- Triton-A
- Triton-E
- NAV
- SVD01
- SVD
- OXS
- Appendix