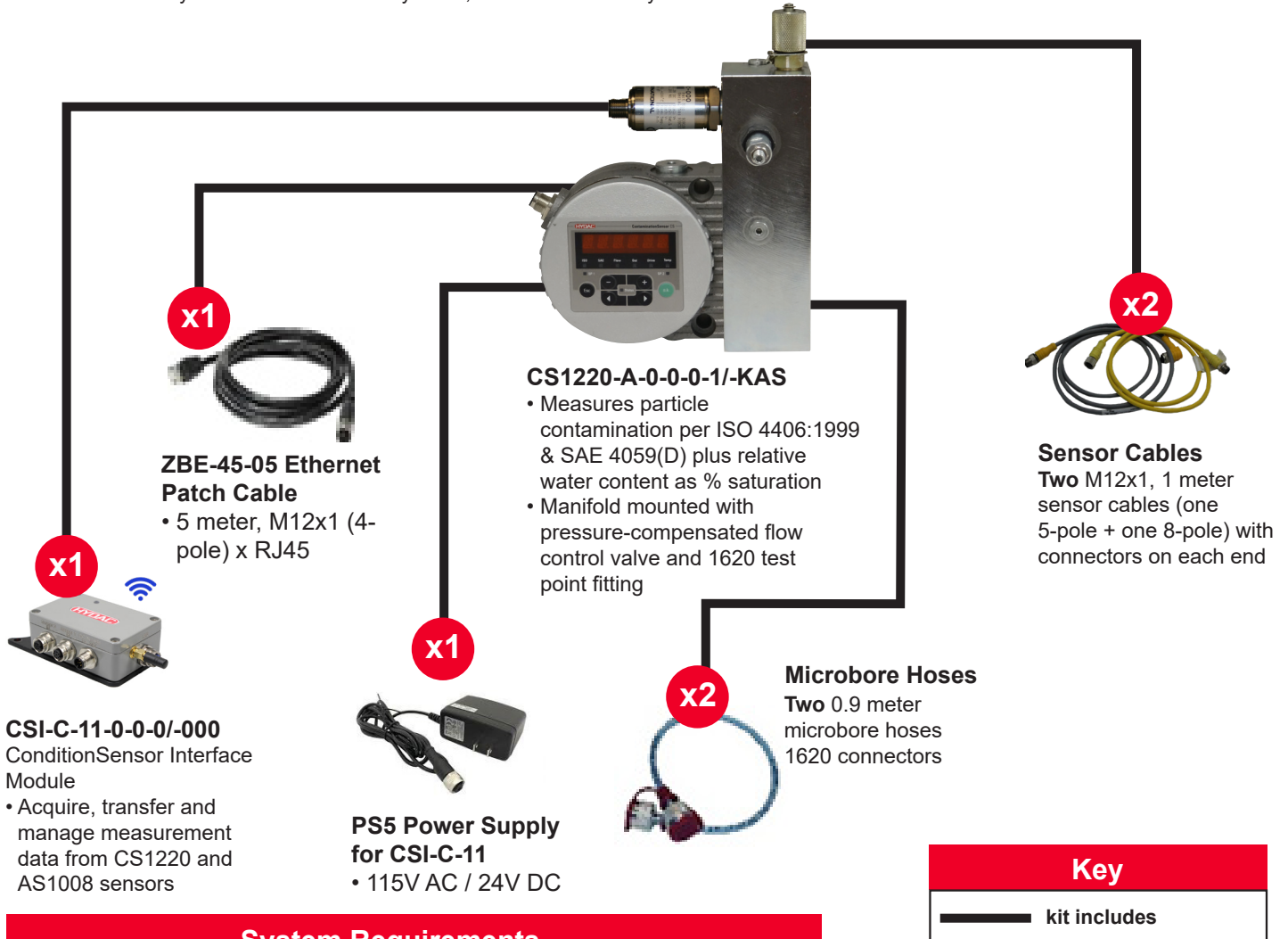


# Starter Kit # 2 - IoT Package

## IoT & Electronic Integration

The **Starter Kit #2 - IoT Package** allows users to analyze and transfer condition monitoring data in real time using WiFi and the FluMoS Mobile Android™ Application or on the CSI-C-11 web server via LAN connection. This plug-and-play starter kit is easily integrated into higher control networks such as PLCs, supervisory control and data acquisition (SCADA) platforms, and distribution control systems (DCS). Applications include: industrial hydraulic and lubrication systems, as well as mobile hydraulics.



### System Requirements

Minimum inlet pressure	125 psi (8.6bar)
Minimum flow rate	0.03–0.07 gpm (100–250 mL/min)
Permissible viscosity range	32–4,635 SUS (1–1,000 cSt)
Permissible fluid temperature	32–185°F (0–85°C)
Permissible fluid type	Mineral-based oils [C/F for other fluid compatibility]
Mounting configuration	Vertical orientation with direction of flow South-to-North through manifold (as shown below)