

High Flow | Low Viscosity Housing Filter

LVHF

*Coalescing Elements Patent-Pending

Applications



POINT OF USE
FUEL DISPENSING



FLEET FILL / BULK FUEL
TRANSFER



BULK FUEL
UNLOADING



PROTECTION FOR
HIGH-FLOW FUEL
INJECTION SYSTEMS



BULK TANK
KIDNEY LOOP /
RECIRCULATION

Features and Benefits

- Excellent filtration performance in a single pass
- Low pressure loss due to innovative element technology
- Easy to service thanks to intelligent element design
- Easy to adapt to filter housings for the removal of the fine particles in diesel
- The Low Viscosity-Housing Filter LVH-F is mainly used to filter low-viscosity fluids. It is especially suitable for applications with large amounts of dirt that need to be removed in just a single pass
- The Optimicron® filter elements used here ensure that both the required cleanliness and a long service life are achieved.
- Available in various sizes, the filters can be optimally integrated into new or existing systems.
- The filters are designed according to ASME Code Section VIII rules and regulations for pressure vessels as well as the ability to certify to other global standards upon request.



Model no. of filter in photograph is:
LVHF340NBRFZ

Markets



INDUSTRIAL



BULK FUEL
FILTRATION



MARINE



MINING
TECHNOLOGY



AGRICULTURE



POWER
GENERATION

211- 951 gpm ICF
799-3600 L/min BDF

150 psi BDFA
10 bar BDA
Standard

GHPF

GHCF

QCF

BDS

BDS2

BDS3

BDS4

LVH-F

LVH-C

BDFC

BDFP

BDC

HDP

HDPD

EPM

EPTT

EWU

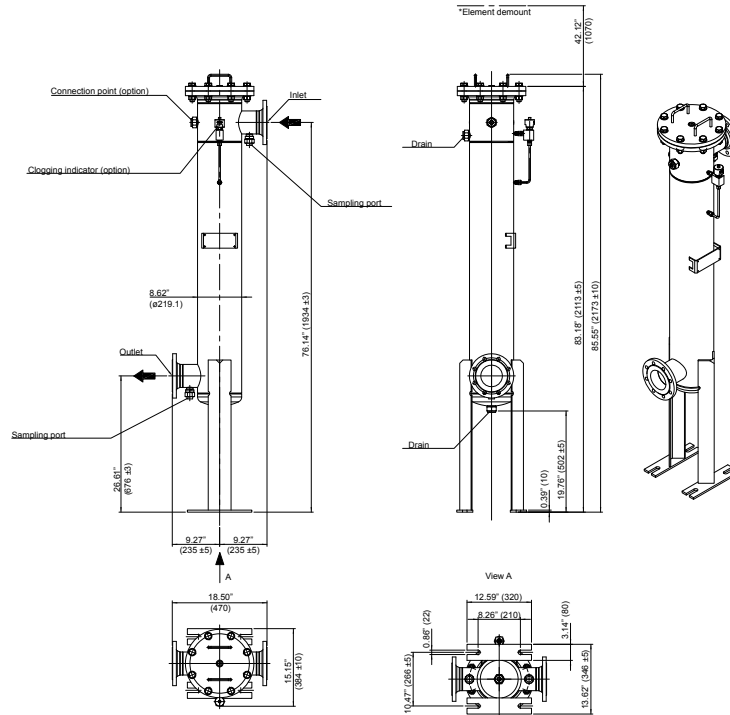
BCC

Filter Housing Specifications

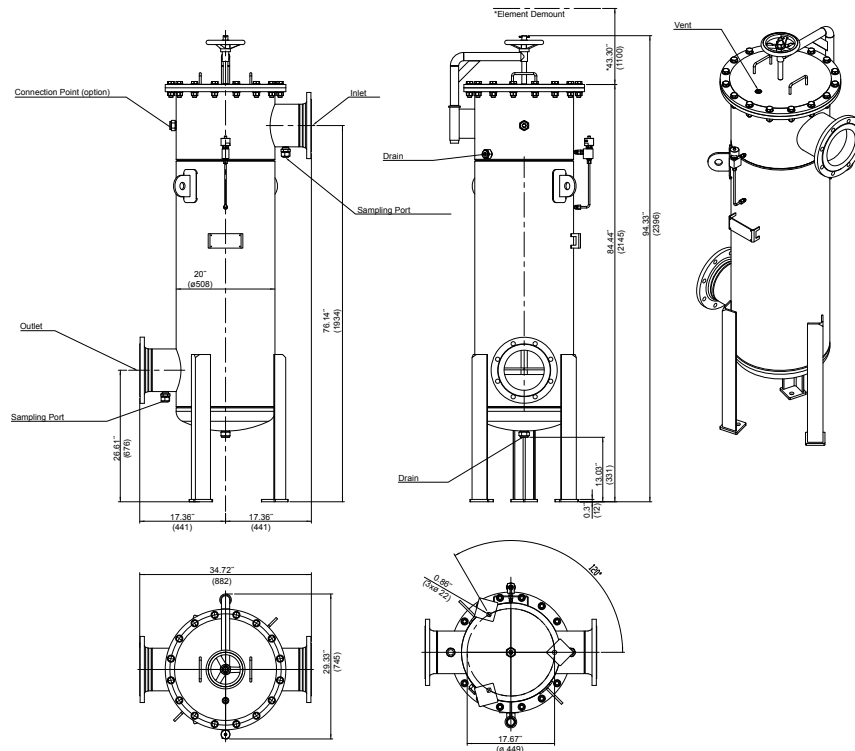
Flow Rating:	211-951 gpm (799-3600 L/min)
Inlet/Outlet Connection:	ANSI 150#: 2" - 12" DIN: DN50-DN300
Max. Operating Pressure:	150 psi (10 bar)
Max. Ambient Temperature:	122°F (50°C)
Max. Operating Temperature:	158°F (70°C)

Material Housing: Stainless Steel or Carbon Steel

Dimensions LVH-F1



Dimensions LVH-F8

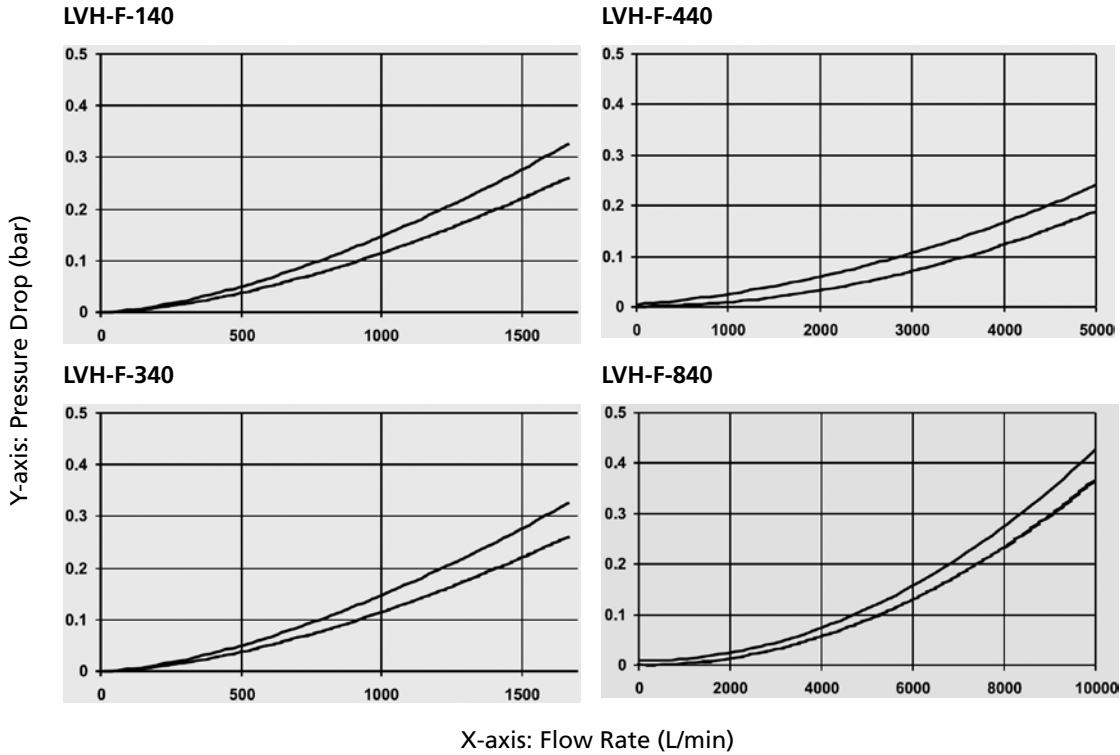


Metric dimensions in ().
Dimensions shown are inches (millimeters) for general information and overall envelope size only.
For complete dimensions please contact Schroeder Industries to request a certified print.

High Flow | Low Viscosity Housing Filter

LVHF

The lower curve applies to diesel at 20°C (the upper curve is for mineral oil with viscosity to 30 cSt for comparison).



Filter Size (Model)	Maximum Flow Rate	Number of Filter Elements
LVH-F-1 40	211 gpm	1 pc.
LVH-F-3 40	317 gpm	3 pcs.
LVH-F-4 40	476 gpm	4 pcs.
LVH-F-5 40	632 gpm	5 pcs.
LVH-F-8 40	951 gpm	8 pcs.

Element	Designation	Part No.
Filter Element 40"	N42ON-DF003-FA40F	3965085
	N42ON-DF005-FA40F	3916691
	N42ON-DF010-FA40F	4055947

* Contact Factory for More Details

Housing Pressure Drop Graphs (Housing ΔP)

- ICF
- BDF
- BDFA
- BDA
- GHPF
- GHCF
- QCF
- BDS
- BDS2
- BDS3
- BDS4

LVH-F

LVH-C

Filter Calculation

- BDFC
- BDFP
- BDC
- HDP
- HDPD

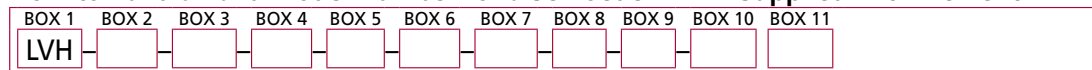
Filter Element Selection

Filter elements must be ordered separately and installed before initial operation on-site

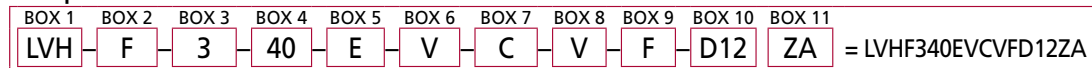
- EPM
- EPTT
- EWU
- BCC

Filter Model Number Selection

How to Build a Valid Model Number for a Schroeder LVH-F Supplied with Element:



Example: NOTE:



BOX 1	BOX 2	BOX 3	BOX 4	BOX 5
Filter Series	Functions	Filter Size	Filter Element Length	Housing Material
LVH	F = Filter	1 = 1 filter element 3 = 3 filter elements 4 = 4 filter elements 5 = 5 filter elements 8 = 8 filter elements	40 = 40"	E = Stainless Steel N = Carbon Steel

BOX 6	BOX 7	BOX 8	BOX 9
Mounting	Pressure Range	Hydraulic Connection	Sealing
V = Vertical H = Horizontal	B = 150 psi (10 bar) C = 232 psi (16 bar)	A2 = 2" ANSI 150# SORF A3 = 3" ANSI 150# SORF A4 = 4" ANSI 150# SORF A6 = 6" ANSI 150# SORF A8 = 8" ANSI 150# SORF L = DIN DN 50 R = DIN DN 100 V = DIN DN 150 W = DIN DN 200 Y = DIN DN 300	F = Viton®

For flanges not listed, contact factory.

BOX 10	BOX 11
Clogging Indicator	Available Certification
C12 = Differential pressure indicator, electrical D17 = Differential pressure indicator, visual/electrical (230V) D18 = Differential pressure indicator, visual/electrical (240V) D32 = Differential pressure indicator, visual/electrical (PVL2GW.0/ V-113) D33 = Differential pressure indicator, visual/electrical (PVL2GW.0/ 111-16) Z = Without clogging indicator	ZA = ASME Certification

NOTES:

Filter elements must be ordered separately and installed before initial operation on site

Fluid Compatibility

Fuel Oils

- ULSD15, low sulfur diesel and high sulfur diesel
- Biodiesel blends
- Synthetic diesel and blends
- No. 2 fuel oil and heating oil