

U.S. Patent 7,604,738 for connecting end cap



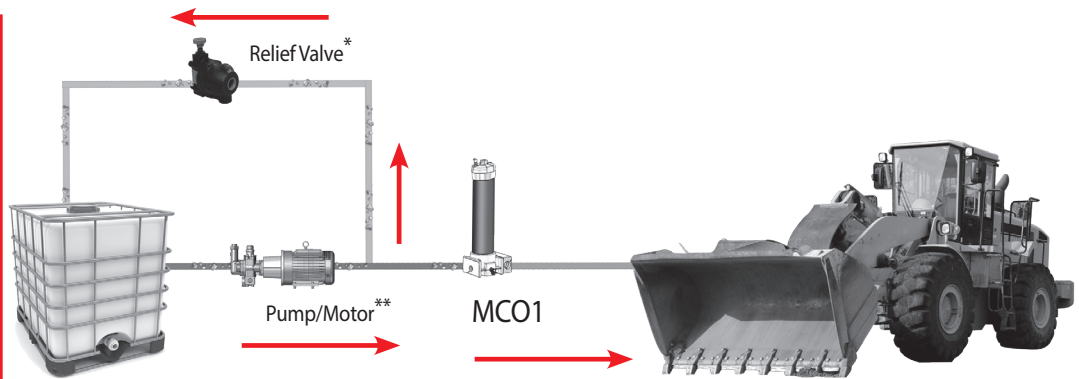
Product Description

- Fail-safe In-Line Mechanical Clean Oil Dispensing Filter rated for 900 psi and 30 gpm
- Ideal for dispensing applications where clean fluid delivery is a must
- Dispensed fluid is filtered or it is returned to the tank
- Field proven to deliver ISO cleanliness levels of 18/15/13 or better in a single pass
- Series filtration with MCO2 and MCO3 filters

Technology

- Housings incorporate a non-bypassing but low cost 150 psi Beta X ≥ 1000 rated element
- Low element cost is achieved through the use of a unique proportional valve that, when used with an external relief valve, redirects the flow back to the tank as element DP increases
- As the element loads, the element service life indicator, located on the housing, indicates that service is required before the fluid flow begins to return to tank. Unfiltered "dirty" oil cannot pass the filter even if the service life indicator is ignored.
- Fluid Cleanliness Sampling Ports provided for proof of filtration into the system being filled
- Easy to install and designed with top service for easy element service
- Push button bleed valves located on each filter housing

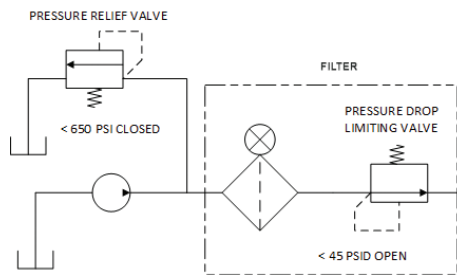
Application Circuit



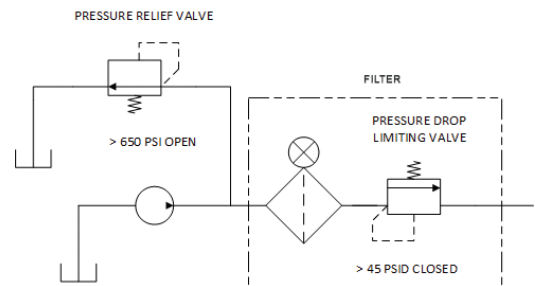
* Product not included in base model pricing.
** Product is customer supplied.

Schematics

Normal Operation



"Bypass" Operation



Fail-Safe In-Line Mechanical Clean Oil Dispenser

U.S. Patent 7,604,738 for connecting end cap

MCO

CS 1000

CS 1939

CSI-C-11

HY-TRAX*

RBSA

CSM

FCU

MCS

AS

SMU

CTU

EPK

Trouble
Check Plus

HMG2500

HMG4000

ET-100-6

HTB

RFSA

HFS-BC

HFS-15

MFD-BC

MFS, MFD

HY-TRAX*
Retrofit System

MFD-MV

MFS-HV

AMS, AMD

FS

AMFS

KLS, KLD

KLCO

MCO

AKS, AKD

LSN, LSA, LSW

X Series

OLF Compact

OLF

OLF-P

NxTM

VEU-F

VMU

IXU

Triton-A

Triton-E

NAV

SVD01

OXS

Appendix

Flow Rating: Up to 30 gpm (113 L/min) for 150 SUS (32 cSt) fluids

Max. Operating Pressure: 900 psi (60 bar)

Min. Yield Pressure: 3200 psi (220 bar), per NFPA T2.6.1

Rated Fatigue Pressure: 750 psi (52 bar) per NFPA T2.6.1-R1-2005

Temp. Range: -20°F to 225°F (-29°C to 107°C)

Bypass Setting: Non-Bypassing System

Porting Head & Cap: Cast Aluminum

Element Case: Steel

Weight of MCO-1K: 21 lbs. (9.5 kg)

Weight of MCO-2K: 32 lbs. (14.5 kg)

Weight of MCO-3K: 43 lbs. (19.5 kg)

Element Change Clearance: 17.50" (445 mm) for KK; 26.5" (673 mm) for 27K

Filter Housing Specifications

How to Build a Valid Model Number for a Schroeder MCO:

| | | | | | | | | | |
|-------|-------|-------|-------|-------|-------|-------|-------|-------|--------|
| BOX 1 | BOX 2 | BOX 3 | BOX 4 | BOX 5 | BOX 6 | BOX 7 | BOX 8 | BOX 9 | BOX 10 |
| MCO | - | - | - | - | - | - | - | - | - |

Example: NOTE: One option per box

| | | | | | | | | | | | | | | | | | | |
|-------|-------|-------|-------|-------|-------|-------|-------|-------|--------|-----|---|---|---|---|---|----|---|----|
| BOX 1 | BOX 2 | BOX 3 | BOX 4 | BOX 5 | BOX 6 | BOX 7 | BOX 8 | BOX 9 | BOX 10 | | | | | | | | | |
| MCO | - | 3 | - | 27 | - | G05 | - | G03 | - | G03 | - | V | - | S | - | D5 | - | RV |

= MCO327G05G03G03VSD5RV

Model Number Selection

| BOX 1 | BOX 2 | BOX 3 | BOX 4 |
|-------|-----------------|----------------|---|
| Model | No. of Housings | Element Length | Element Micron Rating First Filter (MCO1, MCO2, MCO3) |
| MCO | 1 2 3 | 27 | G01 = 1 µm Z-Media* (synthetic) G03 = 3 µm Z-Media* (synthetic) G05 = 5 µm Z-Media* (synthetic) G10 = 10 µm Z-Media* (synthetic) G25 = 25 µm Z-Media* (synthetic) |

| BOX 5 | BOX 6 |
|---|---|
| Element Micron Rating Second Filter (MCO2, MCO3) | Element Micron Rating Third Filter (MCO3 Only) |
| G01 = 1 µm Z-Media* (synthetic) G03 = 3 µm Z-Media* (synthetic) G05 = 5 µm Z-Media* (synthetic) G10 = 10 µm Z-Media* (synthetic) G25 = 25 µm Z-Media* (synthetic) | G01 = 1 µm Z-Media* (synthetic) G03 = 3 µm Z-Media* (synthetic) G05 = 5 µm Z-Media* (synthetic) G10 = 10 µm Z-Media* (synthetic) G25 = 25 µm Z-Media* (synthetic) |

| BOX 7 | BOX 8 | BOX 9 |
|---------------|----------------------------|---|
| Seal Material | Porting | Indicator Options (Only for outlet block) |
| V = Viton* | S = SAE 20 P = 1 ¼ NPTF | D5 = Visual Pop-up MS10 = Electrical with DIN Connector (male end only) MS11 = Electrical with 12ft. 4-conductor wire MS14 = Supplied with 5-pin Brad Harrison make connector and light (male end) |

| BOX 10 |
|---|
| Relief Valve |
| Omit = Customer Supplied RV = Schroeder Relief Valve (set at 650 psi)* |

*The "RV" option is supplied as a loose item. Users have to install the relief valve within their Hydraulic System.

NOTES:

Box 10. An upstream pressure relief valve must be used. Should be no greater than 650 psi.