

Reservoir Breather Fluid Sampling Adapter

RBSA

CS 1000

CS 1939

CSI-C-11

HY-TRAX™

RBSA

CSM

TFL

TFH

FCU

MCS

AS

SMU

CTU

EPK

Trouble

Check Plus

HMG2500

HMG4000

ET-100-6

HTB

RFSA

HFS-BC

HFS-15

MFD-BC

MFS, MFD

HY-TRAX™

Retrofit System

MFD-MV

MFS-HV

AMS, AMD

FS

AMFS

KLS, KLD

MCO

AKS, AKD

LSN, LSA, LSW

X Series

OLF Compact

OLF

OLF-P

NxTM

VEU

IXU

Triton-A

Triton-E

NAV

SVD01

SVD

OXS

Appendix

Features and Benefits

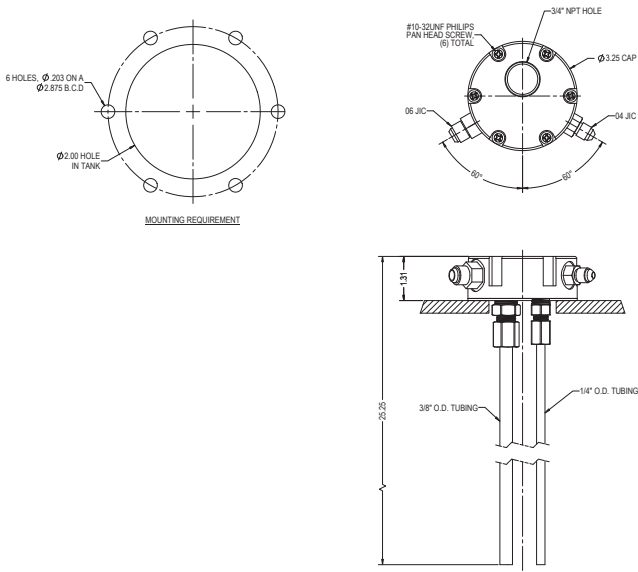
- Drop-in reservoir breather retrofit for fluid sampling provides clean easy access to the reservoir through the existing breather part
- Provides easy fluid quality sampling solution for HY-TRAX® and return ports
- HY-TRAX® adapter kit includes #6 & #4 JIC adapters with 6' connection hoses included
- 24" SS drop tubes can be cut to length
- Standard 6 bolt breather pattern
- Anodized 6061 aluminum breather
- 3/4" NPT for breather element

Market Applications

- All applications with a hydraulic reservoir utilizing a 6-bolt mounting connection



Reservoir Breather Sampling Adapter

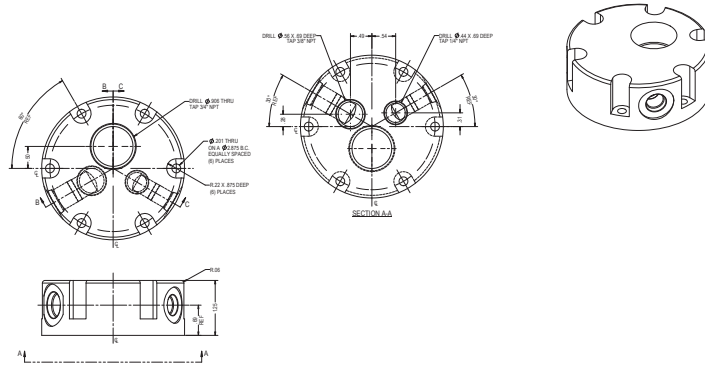


Mounting Requirement

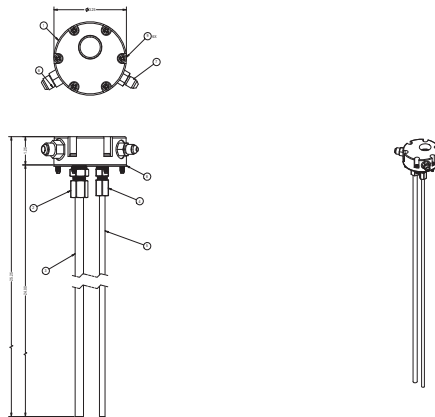
Reservoir Mounting Pattern:	Fits standard 6-bolt
Supply Port Thread Size:	9/16-18 UN
Return Port Thread Size:	7/16-20 UN
Breather Port Thread Size:	3/4" NPT
Fittings:	#6 & #4 JIC fittings and 6' supply/return hoses.
Return Tubes:	Supplied with 3/8" and 1/4" return tubes. Tubes are 24" long and can be shortened if necessary. Housing constructed 6061 anodized aluminum.

Specifications

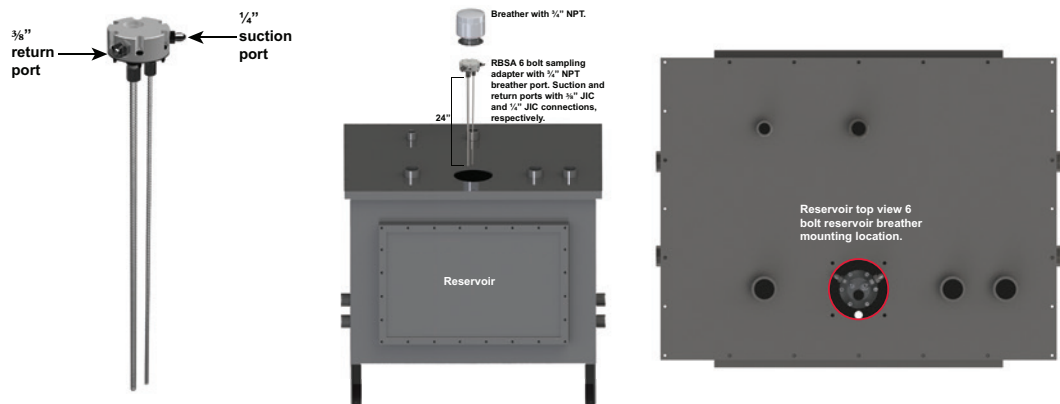
Application Example



Parts List Drawing



Reservoir Mounting Views



Model Number Selection

How to Build a Valid Model Number for a Schroeder Reservoir Breather Fluid Sampling Adapter RBSA:

BOX 1	BOX 2
RBSA	

Example: NOTE: Box 2 can have multiple options.

BOX 1	BOX 2	
RBSA	1	= RBSA-1

BOX 1	BOX 2
Model	Options
RBSA	1 = HY-TRAX® adapter fitting #6 & #4 JIC fittings and 6' supply/return hoses