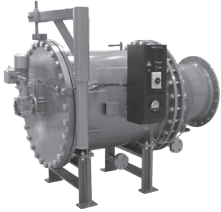


83-33,022
gpm
22-12,501
L/min

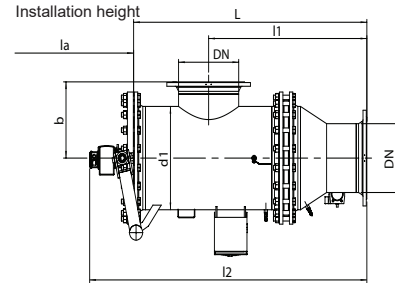
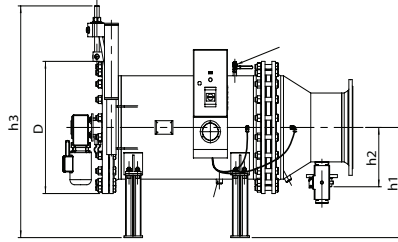
87-232 psi
6-18 bar



Dimensions

The automatic backflushing filter AutoFilt® RF3 has proven its reliable performance successfully for many years in a wide range of different industries. The horizontal backflushing filter AutoFilt® RF7 supplements our backflushing filter family. The AutoFilt® RF7 is a compact model range that is specifically designed for applications with small space and height restrictions.

The working principle and control systems of the AutoFilt® RF7 are identical to those of the AutoFilt® RF3.



Size	DN in (mm)	DN1 in (mm)	l1 in (mm)	b in (mm)	h1 in (mm)	h2 in (mm)	h3 in (mm)	D in (mm)	d1 in (mm)	L in (mm)	l2 in (mm)	G1 in (mm)	G2 in (mm)	la in (mm)
CC	2 (50)	1 (25)	19.8 (504)	7.9 (200)	14.2 (360)	4.7 (120)	25.6 (650)	13.4 (340)	8.7 (220)	25 (635)	35.1 (892)	G1/4	G1/2	21.7 (550)
0B	3.9 (100)	1 (25)	23.5 (596)	7.9 (200)	15.2 (385)	5.9 (150)	27 (685)	13.4 (340)	8.7 (220)	33.5 (850)	45.9 (1165)	G1/4	G1/2	21.7 (550)
1B	5.9 (150)	1.6 (40)	25.5 (647)	10.6 (270)	17.7 (450)	7.4 (189)	31.7 (805)	17.5 (445)	12.8 (324)	35.4 (900)	47.8 (1215)	G1/4	G3/4	21.7 (550)
2B	7.9 (200)	2 (50)	30.1 (764)	12.8 (325)	19.7 (500)	8.6 (220)	39.4 (1000)	22.2 (565)	16 (406)	40.2 (1020)	52.6 (1335)	G1/4	G3/4	27.6 (700)
2.5B	9.8 (250)	2 (50)	40.3 (1024)	12.8 (325)	19.7 (500)	10.2 (260)	39.4 (1000)	22.2 (565)	16 (406)	58.3 (1480)	69.7 (1770)	G1/4	G3/4	27.6 (700)
3B	11.8 (300)	2.6 (65)	41.02 (1042)	15 (380)	23.2 (590)	11.02 (280)	47.2 (1200)	26.4 (670)	20 (508)	61.02 (1550)	72.8 (1848)	G1/4	G3/4	27.6 (700)
4A	15.7 (400)	3.1 (80)	42.1 (1069)	17.7 (450)	25.6 (650)	13.8 (350)	55.1 (1400)	30.7 (780)	24 (610)	62.05 (1576)	73.7 (1873)	G1/4	G3/4	27.6 (700)
5A	19.7 (500)	3.1 (80)	44.8 (1139)	21.7 (550)	29.5 (750)	14.6 (370)	62 (1575)	35.2 (895)	28 (711)	62.4 (1585)	75.6 (1920)	G1/4	1.5" Flange	27.6 (700)
6A	23.6 (600)	3.9 (100)	45.6 (1159)	24.6 (625)	33.1 (840)	18.7 (475)	68.9 (1750)	43.9 (1115)	36 (914)	66.5 (1690)	80.6 (2046)	G1/4	1.5" Flange	27.6 (700)
7A	27.6 (700)	3.9 (100)	47.2 (1200)	29.5 (750)	35.04 (890)	20.1 (510)	74.8 (1900)	48.4 (1230)	40 (1016)	58.1 (1475)	72 (1830)	G1/4	1.5" Flange	27.6 (700)
8A	3.5 (90)	5.9 (150)	58.0 (1474)	37.4 (950)	43.3 (1100)	24.4 (620)	88.6 (2250)	55.3 (1405)	48.03 (1220)	83.2 (2114)	96.9 (2460)	G1/4	1.5" Flange	27.6 (700)

Technical Data

Size	Pressure Rating psi (bar)	Connection Inlet/Outlet	Connection Backflushing Line	Weight Empty lbs (kg)	Volume Gallons (liters)	Amount of Filter Elements	Filter Area in ² (cm ²)	Backflushing Amount gal (liters)	gpm	Liters/ Minute
CC	230 (16)	2" Flange	1" Flange	286 (130)	4 (15)	6	332 (2140)	6.6 (25)	22-124	83-469
0B	150 (10)	4" Flange	1" Flange	342 (155)	7 (25)	6	590 (3810)	6.6 (25)	110-498	416-1885
1B	150 (10)	6" Flange	1.5" Flange	550 (250)	16 (60)	6	960 (6190)	9.2 (35)	396-1118	1499-4232
2B	150 (10)	8" Flange	2" Flange	825 (375)	28 (105)	8	1279 (8250)	13.2 (50)	880-1981	3331-7498
2.5B	150 (10)	10" Flange	2" Flange	1025 (465)	50 (190)	6	1938 (12500)	17.2 (65)	1761-2641	6666-9997
3B	150 (10)	12" Flange	2.5" Flange	1290 (585)	74 (280)	9	2906 (18750)	25.1 (95)	2421-3786	9164-14331
4A	87 (6)	16" Flange	3" Flange	1705 (775)	112 (425)	18	5813 (37500)	55.5 (210)	3566-7484	13498-28330
5A	87 (6)	20" Flange	3" Flange	2290 (1040)	168 (635)	24	8643 (55760)	82 (310)	6604-10787	24998-40833
6A	87 (6)	24" Flange	4" Flange	3635 (1650)	264 (998)	40	13811 (89100)	128.1 (485)	8805-15850	33330-59998
7A	87 (6)	28" Flange	4" Flange	4410 (2000)	358 (1355)	44	16446 (106100)	147 (555)	13208-22014	49997-83332
8A	87 (6)	36" Flange	6" Flange	7960 (3610)	716 (2710)	54	28009 (180700)	190.2 (720)	19813-33022	75000-125001

Backflushing Filter AutoFit® RF7

RF7

How to Build a Valid Model Number for a RF3:

BOX 1	BOX 2	BOX 3	BOX 4	BOX 5	BOX 6	BOX 7	BOX 8	BOX 9	BOX 10	BOX 11
RF7										

Example: NOTE: One option per box

BOX 1	BOX 2	BOX 3	BOX 4	BOX 5	BOX 6	BOX 7	BOX 8	BOX 9	BOX 10	BOX 11
RF7	3B	EPT7	NMA	N	5	1A	2	KS100	3B	ASME

= RF7-3B-EPT8-NMA-N-5-3-2/ KS1000-40-ASME

RF3 —
RF3-8

RF5

RF7

RF10

RF4-1

RF4-2

RF4-3

RF12

RF14

BTU

ATF-1

ATF-2

ATF-2.5

ATF-3

ATF-3.5

ATF-4

PLF1

PLF2

PVD

<p>BOX 1</p> <p>Filter Series</p> <p>RF7</p>	<p>BOX 2</p> <p>Filter Size</p> <p>CC</p> <p>0B</p> <p>1B</p> <p>2B</p> <p>2.5</p> <p>3B</p> <p>4A</p> <p>5A</p> <p>6A</p> <p>7A</p> <p>8A</p>	<p>BOX 3</p> <p>Drive Control / Connecting Voltage</p> <p>EPT = Electro-pneumatic cyclic control, Δp dependent</p> <p>EU = Electric Control, Δp dependent</p> <p>PT = Pneumatic cyclic control</p> <p>PTZ = Pneumatic cyclic timed control</p> <p>7 = 3X415V/N/PE 60Hz</p> <p>8 = 3X460V/X/PE 60Hz</p> <p>9 = 3X440V/X/PE 60Hz</p> <p>E = 1X230V/N/PE 60 Hz</p> <p>F = 1X110V/N/PE 60Hz</p>	<p>BOX 4</p> <p>Housing Material & Coating</p> <p>N = Standard Steel 1.0038 outside primed</p> <p>Standard Steel 1.0038 outside primed, inside metallogal painted</p> <p>NM =</p> <p>E = Stainless Steel 1.4571 with ANSI-flanged,</p> <p>A = additional A at the end</p>
<p>BOX 5</p> <p>Shut Off Valve Material</p> <p>N = Butterfly housing SG cast iron coated, washer stainless steel</p> <p>B = Butterfly housing SG cast iron coated, washer bronze</p>	<p>BOX 6</p> <p>Differential Pressure Gauge</p> <p>1 = Aluminum Pressure Chamber 3.258302</p> <p>2 = Stainless Steel Pressure Chamber 1.4305</p> <p>3 = With Chemical Seal Stainless Steel 316TI</p> <p>5 = HDA 4700 Stainless Steel</p> <p>6 = HDA 4300 Duplex Stainless Steel</p>	<p>BOX 7</p> <p>Flange Setting/ Backflushing Line Setting</p> <p>1 = Outlet to right</p> <p>2 = Outlet up</p> <p>3 = Outlet to left</p> <p>A = Backflushing line to left</p> <p>B = Backflushing downwards</p> <p>C = Backflushing line to right</p>	<p>BOX 8</p> <p>Modification Number</p> <p>Latest version</p> <p>2 = supplied by factory</p>
	<p>BOX 9</p> <p>Element Set</p> <p>KD25 = Conical SuperMesh™</p> <p>K40 = Conical SuperMesh™</p> <p>KS50 = Conical Slotted Tubes</p> <p>KS100 = Conical Slotted Tubes</p> <p>KS200 = Conical Slotted Tubes</p> <p>KS300 = Conical Slotted Tubes</p> <p>KS400 = Conical Slotted Tubes</p> <p>KS500 = Conical Slotted Tubes</p> <p>KS1000 = Conical Slotted Tubes</p> <p>KS1500 = Conical Slotted Tubes</p> <p>KS2000 = Conical Slotted Tubes</p> <p>KS2500 = Conical Slotted Tubes</p> <p>KS3000 = Conical Slotted Tubes</p>	<p>BOX 10</p> <p>Size of Element Set</p> <p>Same as BOX 2 Value (first letter/numbr only)</p>	<p>BOX 11</p> <p>Vessel Certification</p> <p>Omit = Standard Version</p> <p>ASME = ASME Version</p>

NOTES:
 Box 3. Needs to have control type and voltage selected ex. EPT8.
 Box 4. can contain two options ex. NMA.
 note. If ANSI flanges are not specified DIN style will be provided.