

70-600 gpm  
268-2270  
L/min

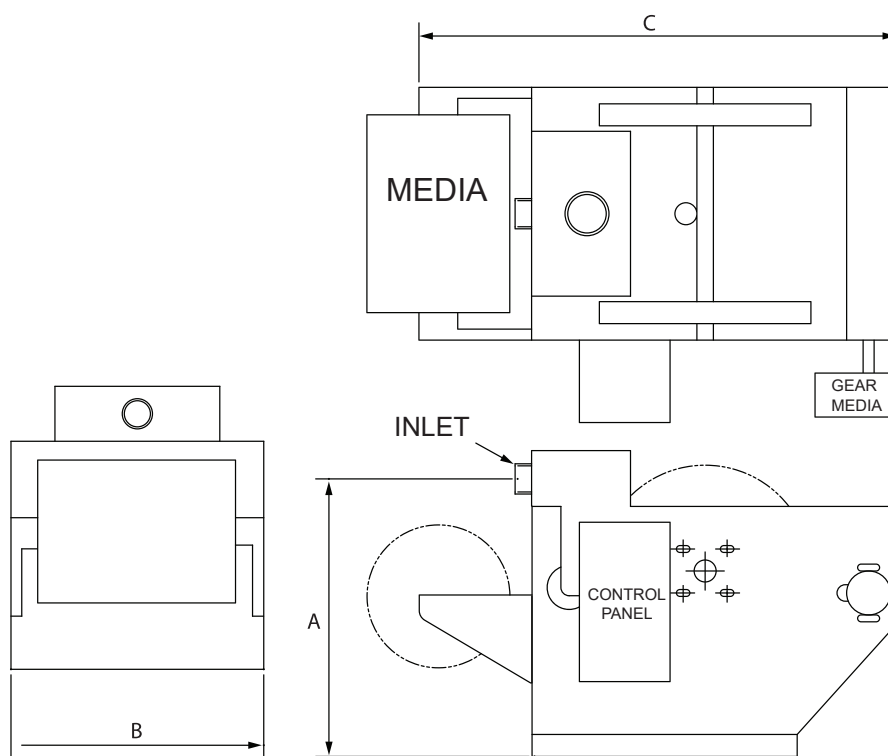


The Rolling Media Filter (RMF) provides a highly efficient and reliable means of removing solids from process liquids. This filter is a non pressurized system which is economical and easy to operate. It can handle occasional system upsets or overloads without blinding the filter media.

The RMF is a fully automatic system that ensures efficient cleaning of any process fluid. It optimizes the amount of media used at the same time. The solids are discharged as a cake for easy handling and disposal.

The liquid to be filtered is pumped or gravity fed into inlet. It is then distributed to the flood box, which slows the velocity and discharges the liquid over the entire width of the filter media. The liquid filters through the media, and the solids are left behind collecting on the filter media surface. The clean liquid is discharged through the outlet into a tank or discharged into an open system.

As the solids are collected on the filter media, the liquid level rises to a preset level. A level sensor initiates an index cycle and fresh media is indexed displacing a portion of the spent media. The media is then discharged to a waste container.



## Dimensions

	A		B		C		Flow Rate
	inches	mm	inches	mm	inches	mm	
RMF70	37.00	940	30.00	762	43.25	1099	71
RMF145	34.25	870	40.00	1016	52.75	1340	146
RMF210	34.25	870	52.00	1321	52.75	1340	212
RMF275	34.25	870	64.00	1626	52.75	1340	275
RMF300	41.75	1060	52.00	1321	65.75	1670	300
RMF350	34.25	870	73.00	1854	52.75	1340	350
RMF400	41.75	1060	83.00	1626	65.75	1670	400
RMF500	41.75	1060	73.00	1854	65.75	1670	500
RMF600	41.75	1060	83.00	2108	65.75	1670	600

# Rolling Media Filtration

**RMF**

Construction Material: Epoxy coated, Carbon steel

Conveyor Material: 304 stainless steel

Seal Wheels: Aluminum

**Specifications** SW

DCE/ACE

PP

CH1

CH3 - CH7

CH3 -CH12

**Filter Model Number Selection** CH13-CH173

**RMF**

## How to Build a Valid Model Number for a Rolling Media Filtration:

BOX 1	BOX 2	BOX 3	BOX 4	BOX 5	BOX 6
RMF					

Example: NOTE: One option per box

BOX 1	BOX 2	BOX 3	BOX 4	BOX 5	BOX 6	
RMF	70	AL	CS	N	C	= RMF70ALCSNC

BOX 1	BOX 2	BOX 3	BOX 4	BOX 5
<b>Filter Series</b>	<b>Filter Size</b>	<b>Wheel Material</b>	<b>Housing Material</b>	<b>Wheel Seals</b>
RMF	70 = 70 gpm 145 = 145 gpm 210 = 210 gpm 275 = 275 gpm 300 = 300 gpm 350 = 350 gpm 400 = 400 gpm 500 = 500 gpm 600 = 600 gpm	AL = Aluminum SS = Stainless Steel	CS = Carbon Steel SS = Stainless Steel	N = Neoprene T = Teflon
		BOX 6		
		<b>Options</b>		
		O = None C = Cover M = Media Recovery System D = Contamination Dryer		

## How to Build a Valid Model Number for a Schroeder RMF Media:

BOX 1	BOX 2	BOX 3	BOX 4
RMF			

Example: NOTE: One option per box

BOX 1	BOX 2	BOX 3	BOX 4	
RMF	RM	07	27	= RMFRM0727

BOX 1	BOX 2	BOX 3	BOX 4
<b>Filter Series</b>	<b>Replacement Type</b>	<b>Micron Rating</b>	<b>Roll Width</b>
RMF	RM = Roll Media	07 = 7 µm 12 = 12 µm 14 = 14 µm 18 = 18 µm 28 = 28 µm 50 = 50 µm 200 = 200 µm	27 = 27" Wide (BWC 70/145) 39 = 39" Wide (BWC 210/300) 51 = 51" Wide (BWC 400) 60 = 60" Wide (BWC 500) 70 = 70" Wide (BWC 600)

**Replacement Parts for RMF**