

Schroeder Check Test Point System



- Schroeder Pressure Test Kits are available in four configurations as shown below. Highest quality components were selected for versatility and long service life. Contents of each kit are listed below.
- The optional gauge range should be specified using the order code shown above.
For example: UB102-1-2 specifies one (1) 100 psi gauge and one (1) 200 psi

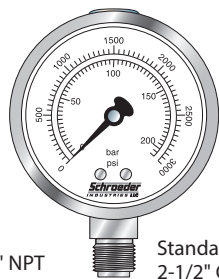
UB101-(*)	UB102-(*)-(*)	UB103-(*)-(*)-(*)	UB106-(*)-(*)-(*)-(*)-(*)-(*)
1 U401 Gauge (*)	2 U401 Gauges (*)-(*)	3 U401 Gauges (*)-(*)-(*)	6 U401 Gauges (*)-(*)-(*)-(*)-(*)-(*)
1 Microflex Hose 36"	2 Microflex Hoses 36"/72"	3 Microflex Hoses 12"/36"/72"	6 Microflex Hoses, 2x12"/2x36"/2x72"
1 Hose Joiner	1 Hose Joiner	1 Hose Joiner	3 Hose Joiners
1 (Hose) Gauge Adapter	1 (Hose) Gauge Adapter	1 (Hose) Gauge Adapter	3 (Hose) Gauge Adapters
1 Direct Gauge Adapter	1 Direct Gauge Adapter	1 Direct Gauge Adapter	3 Direct Gauge Adapters
3 Schroeder Check Test Points:	6 Schroeder Check Test Points:	6 Schroeder Check Test Points:	12 Schroeder Check Test Points:
1 ea. 1/4" NPT	2 ea. 1/4" NPT	2 ea. 1/4" NPT	4 ea. 1/4" NPT
1 ea. 7/16" UNF	2 ea. 7/16" UNF	2 ea. 7/16" UNF	4 ea. 7/16" UNF
1 ea. 9/16" UNF	2 ea. 9/16" UNF	2 ea. 9/16" UNF	4 ea. 9/16" UNF

Pressure test kits are also available with U400 all stainless steel gauges. Part numbers are U101-(*)-(*)-(*)...etc.



Custom Test Kits are designed for many special requirements. Utilizing components from Schroeder gauge and pressure test kits, these boxes are constructed for reliability and precision.

For additional information on custom test kits, please consult factory.



1/4" NPT

Standard
2-1/2" Case

With the Schroeder Check System, one top quality gauge can do the work previously done by many. Compromising on low cost, short life gauges with questionable accuracy is no longer necessary. A series of precision instruments, Schroeder gauges are fluid filled with full scale accuracy of $\pm 1.5\%$ (or better). Dual scale dial has a non-reflective white background and a high contrast matte black pointer. Cases and connections are stainless steel, internals are brass. Ideal for most liquids and gases under pressure or vacuum where contact with the liquid filling would not be hazardous. For additional applications, information, and pressure ranges, please consult the factory.

Part Number	Pressure	Order Code (needed for test kits)
U401-30/100-01*	30 in Hg VAC to 100 psi (6.9 bar)	0
U401-100-01	0 to 100 psi (6.9 bar)	1
U401-200-01	0 to 200 psi (13.8 bar)	2
U401-600-01	0 to 600 psi (41.2 bar)	6
U401-1000-01	0 to 1000 psi (70.0 bar)	10
U401-1500-01	0 to 1500 psi (103.0 bar)	15
U401-3000-01*	0 to 3000 psi (207.0 bar)	30
U401-5000-01	0 to 5000 psi (345.0 bar)	50
U401-6000-01*	0 to 6000 psi (414.0 bar)	60
U401-10000-01	0 to 10000 psi (689.0 bar)	100

*Also available is U400-XXX-01 gauge, identical to U401 except with stainless steel internals.

Preferred order codes designate shorter lead times and faster delivery.

Schroeder
Pressure
Test Kits

Test Points

Adapters

Part Number

Hose
Joiners

Microflex
Hose

Pressure
Limiters

Schroeder
Custom
Test Kits

Test Kits

Pressure
Gauges

Pressure
Gauges

GS

Part Number

Reservoir
Breather
Fluid
Sampling
Adapter

Probalizer