

Magnet Inserts for Filters

Air Breathers

KF30, KF50, KC50, KC65 and TF50 are available with magnet inserts to trap ferrous material that passes through the filter element.

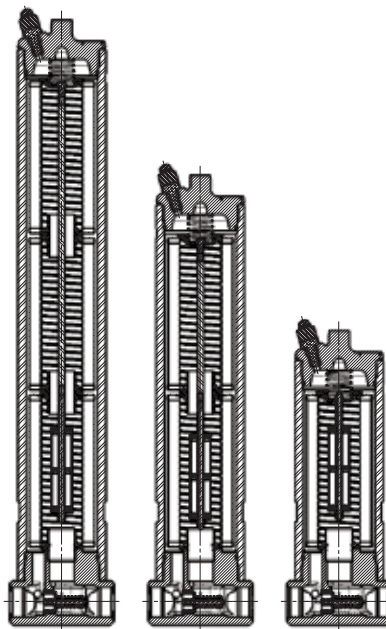
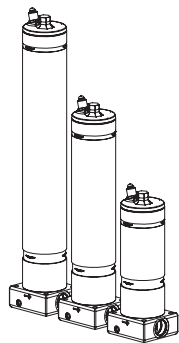
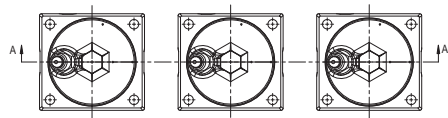
These inserts are removed with the element each time service is performed and cleaned before being reinserted with new elements.

Replacements are available by ordering parts:

	Single Element	Double Element	Triple Element
KF30, KF50, KC50, KC65, KF3, LF1, MLF1	A-LF-1592	A-LF-1593	A-LF-1594
TF50	A-TF-301-1	A-TF-302-1	

Magnet Inserts for Filters

Suction Separators and Strainers



SAE Weld Flanges

SAE Weld Flanges

Available immediately, Schroeder has a line of reservoir weld flanges. These flanges have SAE female O-ring port threads and are intended to be welded into a reservoir.

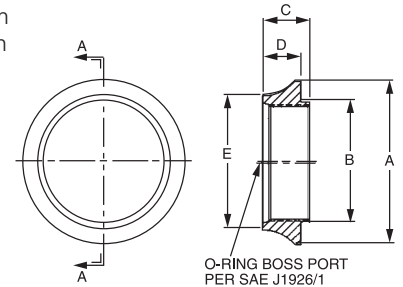
- Fewer leaks
- Cleaner installation
- Reduced cavitation of pumps/aeration of oil when used on suction lines
- Faster assembly time
- Reduced contamination (no pipe dope or Teflon tape being introduced into the system)

Specifications

Flange material: Forged steel

Flange finish: Black phosphate (suitable for welding)

Port sizes: See chart below for listing of available port sizes



SECTION A-A

Part Number	SAE Size	Port Thread Size	Dimensions - inches (mm)				
			A	B	C	D	E
WF-4	SAE-4	7/16" - 20 UNF-2B	1.50 (38)	0.93 (24)	0.56 (14)	0.31 (8)	1.00 (25)
WF-5	SAE-5	1/2" - 20 UNF-2B	1.50 (38)	0.93 (24)	0.56 (14)	0.31 (8)	1.00 (25)
WF-6	SAE-6	9/16" - 18 UNF-2B	1.50 (38)	0.93 (24)	0.56 (14)	0.31 (8)	1.00 (25)
WF-8	SAE-8	3/4" - 16 UNF-2B	1.50 (38)	0.93 (24)	0.56 (14)	0.31 (8)	1.00 (25)
WF-10	SAE-10	7/8" - 14 UNF-2B	2.13 (54)	1.38 (35)	0.69 (18)	0.44 (11)	0.44 (11)
WF-12	SAE-12	1 1/16" - 12 UNF-2B	2.13 (54)	1.38 (35)	0.69 (18)	0.44 (11)	0.44 (11)
WF-14	SAE-14	1 3/16" - 12 UNF-2B	2.38 (60)	1.66 (42)	0.75 (19)	0.50 (13)	1.75 (44)
WF-16	SAE-16	1 5/16" - 12 UNF-2B	2.38 (60)	1.66 (42)	0.75 (19)	0.50 (13)	1.75 (44)
WF-20	SAE-20	1 5/8" - 12 UNF-2B	2.69 (68)	2.00 (51)	0.75 (19)	0.50 (13)	2.13 (54)
WF-24	SAE-24	1 7/8" - 12 UNF-2B	3.00 (76)	2.25 (57)	0.75 (19)	0.50 (13)	2.38 (60)
WF-32	SAE-32	2 1/2" - 12 UNF-2B	3.50 (89)	2.63 (67)	0.84 (21)	0.59 (15)	2.88 (73)
WF-48	SAE-48	3 3/8" - 12 UNF-2B	4.63 (118)	3.66 (93)	1.00 (25)	0.81 (21)	3.94 (100)

NOTE:

WF-48 has 338-12 O-ring thread that was extrapolated from SAE standard threads

Filler Strainer Assemblies

Air Breathers

A-TB-779

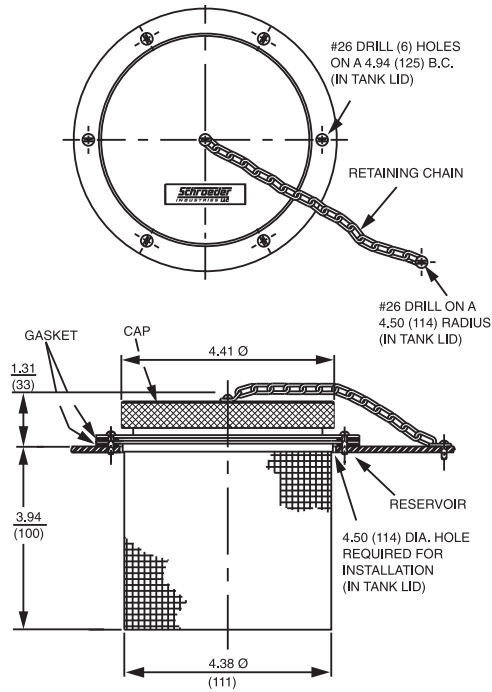
A-TB-780

Speed the process of adding fluid to a reservoir by using our rapid fill cap and strainer. The strainer is 4.38" in diameter and designed to accept cold viscous fluids easily. Choose from two strainer mesh sizes: A-TB-779, which features #24 mesh, and A-TB-780, which is supplied with #70 mesh. The cap completely seals the opening. All assemblies are supplied with necessary hardware, including retaining chain for cap and self tapping screws for installation.

Specifications: A-TB's

Model Number	Mesh Size	Strainer O.D.	Strainer Height	Flange Diameter
A-TB-780	70	4.38	3.94	5.56
A-TB-779	24	(111)	(100)	(141)

Metric dimensions in ().



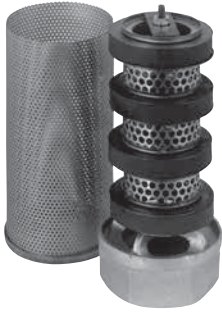
Rapid Fill Cap and Strainer

Suction Separators and Strainers



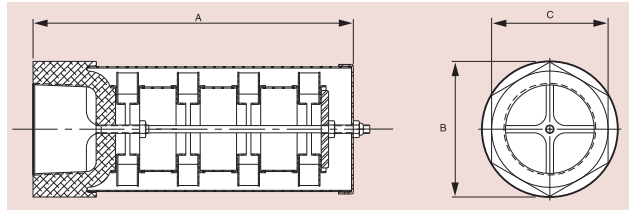
Oil Sight Glasses

Magnetic Suction Separators



With the use of Schroeder's Magnetic Suction Separators, suction line filtration is provided without starving the pump. They offer unique protection for pumps from all sizes of ferrous particles, some of which have the potential of destroying a pump in a single pass. Large ceramic magnets are spaced along the length of the separator. All hydraulic fluid entering the pump must move at low velocity through a powerful magnetic field. This field traps large quantities of micron ferrous particles. The viscous properties of the fluid can cause some non-ferrous particles to adhere to the magnetically trapped particles.

Schroeder SKB's are available in sizes ranging from one to three inches. The chart below shows the part numbers, specifications, and dimensions of available models.



Complete Model Number	Pipe Size	Flow gpm	Δ psi at Max. gpm	Dimensions		
				A	B	C
SKB-1	1"	15 (55)	0.05	5.25 (133)	3.25 (83)	1.62 (41)
SKB-1.25	1¼"	25 (95)	0.05	8.25 (210)	3.50 (89)	3.00 (76)
SKB-1.5	1½"	35 (135)	0.08	8.25 (210)	3.50 (89)	3.00 (76)
SKB-2	2"	50 (190)	0.10	8.25 (210)	3.50 (89)	3.00 (76)
SKB-3	3"	100 (380)	0.02	10 (254)	4.75 (121)	4.00 (102)

Metric dimensions in ().

The standard outer screen has adequate open area (.079 inch diameter perforations) to eliminate the possibility of pump starvation. All models are also available with a pleated 20 mesh screen (850 micron) by adding SS20 to the model number. (Example SKB-1-SS20.)

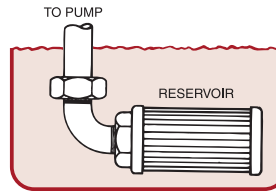
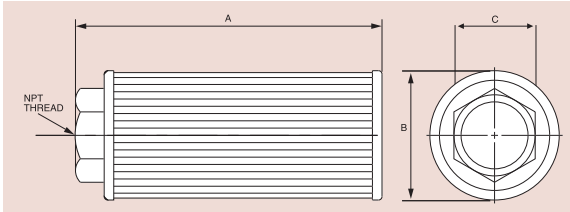
Please note that we also offer in-line filter housings equipped with SKB elements. See In-Line Magnetic Suction Separators and Tank-Mounted Magnetic Suction Separators (pages 287-290) for details.

Suction Strainer Elements

Air Breathers

These all metal suction strainers are furnished with optimized pleat size and screen area for extended life and low pressure drop. 100 mesh stainless steel screen (140 micron) has 33.3% open area. Porting head is carbon steel, center core is plated perforated steel. End cap is heavy gauge zinc plated steel. These strainers can handle temperatures up to 250°F (121°C).

60 mesh (238 micron) and 200 mesh (74 micron) models also available – contact factory.



SS Tank Mounted Suction Strainer Elements

Suction Separators and Strainers

Oil Sight Glasses



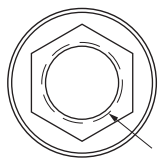
Model Number		Other Information					
Basic Model	Optional 3 psi Bypass	Pipe Size	Flow* gpm (L/min)	Dimensions			Screen Area in2 (cm2)
				A	B	C	
SS-5-100	(Omit) = None	½"	5 (19)	3.10 (79)	2.63 (67)	1.12 (28)	68 (439)
SS-75-100		¾"	8 (30)	3.55 (90)	2.63 (67)	1.31 (33)	68 (439)
SS-1-100		1"	10 (38)	5.35 (136)	2.63 (67)	1.62 (41)	112 (723)
SS-1.25-100	-3 = Bypass valve	1¼"	20 (76)	6.85 (174)	3.38 (89)	1.88 (48)	165 (1065)
SS-1.5-100		1½"	30 (114)	8.01 (204)	3.38 (89)	2.12 (54)	251 (1619)
SS-2-100		2"	50 (189)	9.85 (250)	3.94 (100)	2.75 (70)	351 (2265)
SS-2.5-100		2½" **	75 (284)	10.10 (257)	5.12 (130)	3.22 (82) Round Coupling	405 (2613)
SS-3-100		3" **	100 (379)	11.83 (300)	5.12 (130)	4.00 (102) Round Coupling	502 (3239)

*Flow rating based on 5 FPS or less.

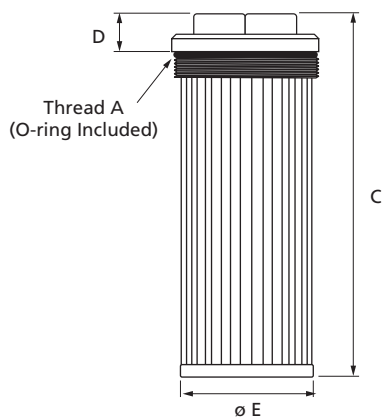
**denotes coupling instead of bushing

Metric dimensions in ().

Examples: SS-2-100 SS suction strainer, 2" NPT, without bypass valve.
SS-1-100-3 SS suction strainer, 1" NPT, with 3 psi bypass valve.

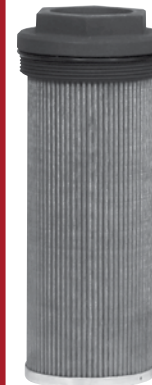


Thread B



These suction strainers have O-ring built in for a more secure fitting. The suction strainers can be supplied with a bypass valve to reduce high pressure drop caused by contaminated elements or high viscosity fluids during cold starting.

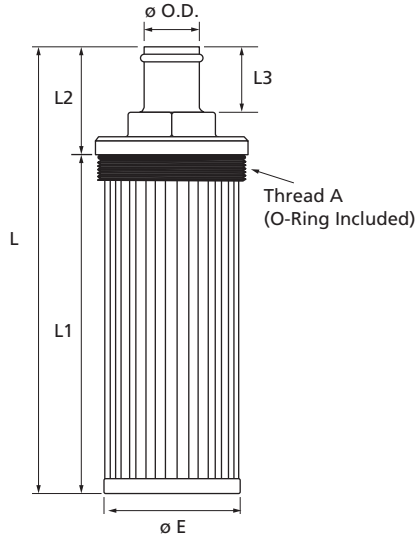
SSO Tank Mounted Suction Strainer Elements



Model Code	Optional 3 psi Bypass	Per SAEJ514			GPM	Screen Area (Sq. In.)	Dimensions		
		THD A	THD B	Hex Size			C	D	ØE
SSO-20-100	(Omit) = None	2-1/2"-12	1-5/8"-12	2.13"	9	90	9.00"	0.75"	2.24"
SSO-24-100	(-3) = Bypass valve	3-3/8"-12	1-7/8"-12	2.50"	21	230	8.80"	0.90"	3.22"
SSO-32-100		3-3/8"-12	2-1/2"-12	3.00"	39	230	9.30"	0.98"	3.22"

Suction Strainer Elements

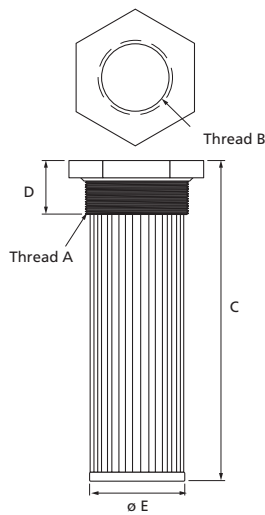
Hose Barb | SSHB Tank Mounted Suction Strainer Elements



These suction strainers have additional fittings attached for hose barb settings.

Model Code	Optional 3 psi Bypass (Omit) = None (-3) = Bypass valve	Per SAEJ514		Hex Size	GPM	Dimensions				
		THD A	O.D.			L	L1	L2	L3	E
SSHB-1.25-100	(Omit) = None	2-1/2"-12	1.25"	1.50"	14	10.00"	8.00"	2.00"	1.25"	2.12"
SSHB-2-100	(-3) = Bypass valve	3-3/8"-12	2.00"	2.50"	40	10.80"	7.84"	2.97"	2.00"	3.22"

NPT Tank Mounted Suction Strainer Element



These suction strainers have external fitting installed for male NPT ports.

Model Code	Optional 5 psi Bypass (Omit) = None (-5) = Bypass valve	GPM	Screen Area (Sq. In.)	THD A	THD B	Hex Size	Dimensions		
							C	D	ØE
SSP-2-100	(Omit) = None	50	260	3" NPT	2" NPT	3.30	10.25"	1.70"	3.03"
SSP-3-100	(-5) = Bypass valve	100	315	4" NPT	3" NPT	5.00	11.30"	1.80"	3.78"